

**American Bullmastiff Association Archives Committee**

# **The Bullseye**

**Marilyn Cather Digitization Project**  
**- generously funded by Lindy Whyte and Vince Grlovich**

**ABA Bulletins digitized with club permission**  
**Bullseyes and Pedigree Pictorials published by Carol Beans and digitized with permission**

# The Bullseye



NEWS FOR, OF AND BY BULLMASTIFF FANCIERS

VOLUME XXIV NUMBER 3

DECEMBER 2000



Happy Holidays



TABLE OF CONTENTS

LETTER FROM THE EDITOR..... 3

SEMEN EVALUATION AND ARTIFICIAL INSEMINATION IN THE DOG - Dr. Gary England.....4

THANKS FOR THE MEMORIES - Connie Urbanski..... 9

BULLMASTIFF ADS.....10 - 35

SUMMERFEST VENTURA, CA SHOW CIRCUIT..... 36

PIECES OF THE PAST..... 38

PREVENTING EYE DISORDERS - Marina Zacharias..... 40

RIGHT NOW RECIPES.....41

BREEDERS' LISTING..... 43

AA

The Bullseye is published bi-monthly in August, October, December, February, April, and June.

**SUBSCRIPTION RATE: \$35 PER YEAR**  
**ADVERTISING RATES:**

\*\*\*\*\*  
 News, articles, ads and anecdotes are welcome. They are subject to editorial approval

Full page, color bold print with picture	\$65.00
Full page, black bold print with picture	\$50.00
Full page, color bold print no picture	\$50.00
Full page, black bold print no picture	\$40.00
Half page, color bold print with picture	\$40.00
Half page, black bold print with picture	\$30.00
Half page, black bold print no picture	\$20.00

Advertising is accepted at the discretion of the editor.

Opinions expressed and claims made are those of the author and may or may not be the opinion of the editor/publisher.

ADDITIONAL PICTURES PER PAGE EACH	\$15.00
50 REPRINTS OF FULL PAGE AD	\$15.00
BREEDERS' LISTING (per year)	\$10.00

Editor-Publisher  
 MRS. CAROL H. BEANS

SEND ALL MATERIAL TO AND MAKE ALL CHECKS PAYABLE TO:  
**THE BULLSEYE**  
 12131 Arroyo Avenue, Santa Ana, CA 92705

**OVERSEAS SUBSCRIPTIONS - \$50 PER YEAR**

---

## **EDITOR'S LETTER**

Since August Of 1977 every other month I have sat down at either a typewriter or computer to produce an issue of The Bullseye. Today I am putting the final touches to the last issue.

It has been a rewarding 24 years of effort. I have met so many lovely people and gotten to see pictures of so many Bullmastiffs, and shared in so many great events with other owners. However, since everything must end sometime I decided the December issue is to be the last. Going on one or two more issues wouldn't change the fact that I have decided to stop.

If someone else decides to produce a Bullmastiff magazine I'd be happy so see that done. There can never be too much information on the breed. The Bullseye has always been produced at cost. Each month I squeak through with just enough in the bank to produce that issue and get a bit of a start on the next. Believe me it has been a labor of love.

From the touching tributes sent in for this final issue I know The Bullseye has accomplished what I set out to do with it - be of service to Bullmastiff fanciers. Thank you all for your kind remarks. They are very appreciated.

I will continue to produce The Pedigree Pictorial for as long as that is possible. A once a year publication is a lot more doable in present circumstances than one that needs to be produced 6 times yearly.

It has been my great pleasure to get to know so many people through this magazine and I hope we will not lose touch with each other.

I feel that there are other sources of excellent information on the breed now and my life is getting just a bit complicated with all the home projects, travel, family matters, etc.

So again THANK YOU ALL for your support and kindness over the years. Until we meet.



---

## **SEMEN EVALUATION AND ARTIFICIAL INSEMINATION IN THE DOG.**

**By DR. GARY ENGLAND**

Artificial insemination is the technique of collecting semen from a male animal, and placing it into the reproductive tract of the female. There are many advantages of using the technique for the breeding of all animal species including the dog. Artificial insemination may involve the use of freshly collected semen, semen that has been diluted, chilled and stored or semen which has been frozen and then thawed.

It is commonly thought that artificial insemination (AI) only involves the use of semen which has been frozen and then thawed. This is not the case; insemination may be performed with fresh semen, with semen that has been diluted (extended) and chilled, or with semen that has been frozen and then thawed. There have been many recent developments involving these techniques, although probably the most significant has been that of the American Kennel Club allowing registration of litters resulting from insemination with frozen semen. The Kennel Club in the UK does not allow registration of litters which are the result of artificial insemination, unless prior permission has been given. The reasoning behind this is unclear. It is obviously undesirable to allow animals to reproduce by AI if they are prevented from natural mating by inherited defects. However, the reluctance to accept artificial insemination is difficult to understand. It is not possible to use a single ejaculate to inseminate many bitches as is the case in the cow. The ejaculate collected from a dog is often only sufficient in sperm numbers to allow the insemination of one bitch. It is therefore highly unlikely that one dog will be excessively used within a breed as a result of AI, and there is no concern that a narrow genetic pool will result. The potential for corruption with AI is no greater than at natural mating, indeed it is less likely when the expense in terms of time and financial commitment are considered. With modern techniques of DNA fingerprinting, the concern of proving an animals' parentage has now been removed. Artificial insemination has several advantages. It reduces the requirement to transport animals both within a country and internationally. This is an acceptable way of overcoming, to some extent the quarantine restrictions that prevent the movement of animals from one country to another. It also increases the genetic pool available to an individual breed within a country.

Artificial insemination reduces the disease risk which is always present when unknown animals enter a kennel for mating. In some countries the use of AI may reduce the spread of infectious diseases. In certain circumstances, artificial insemination may be useful when natural mating is difficult. For example bitches which ovulate when they are not in standing oestrus or bitches that have hyperplasia of the vaginal floor may be inseminated when natural mating is difficult. Semen may also be collected from male animals which due to age, debility, back pain or premature ejaculation are unable to achieve a natural mating. Probably the greatest area of interest is however the storage of genetic material by freezing semen for insemination at a future date. This may be necessary in male animals that are likely to become infertile due to castration or to medical treatments with certain hormones. The more common reason is however the preservation of semen from superior animals for use in future generations. The study of methods for artificial insemination has led to the development of techniques that are now used to evaluate the quality of semen.

### **SEMEN EVALUATION**

There are many reasons why it might be necessary to collect and examine semen. This may be as part of a routine pre-breeding examination in a young dog, or one that has not been used before at stud. It may also be important in dogs which are not used frequently for mating. Male fertility is an important

---

**SEMEN EVALUATION AND ARTIFICIAL INSEMINATION IN THE DOG (continued):**

aspect of breeding management especially where it is important to ensure that as many matings as possible are fertile. Despite the obvious importance of male fertility the value of regular semen examination has attracted little attention in dog breeding. It is however commonly examined in other breeding animals. A change in a dogs fertility is particularly important considering the long interval between successive oestrus cycles in the bitch. The average inter-oestrus interval in the bitch is seven months. Therefore should a mating be infertile, much time is wasted. In certain cases semen examination may be considered mandatory, eg prior to the sale of a potential stud dog, or in older dogs; for example the American Kennel Club requires that all males over 12 years of age have certification of fertility based upon a semen examination.

The commonest reason for semen collection and evaluation is when there is concern over infertility. On average when bitches are mated without the use of vaginal cytology, the fertility rate is about 80%. This means that for any one dog 1 mating in 5 will not result in a pregnancy; some dogs may be worse than this average. If semen evaluation is considered to be of use, how often should it be performed? There is no absolute answer to this question, however often semen is collected every six months to one year. Additional semen examinations are performed when a pregnancy does not occur following matings during the fertile period (based upon vaginal cytology).

This policy is probably too intensive for many breeding establishments but has so far proved to be very successful in identifying problems before they have occurred, and also in explaining non-successful matings. Before semen is collected, valuable information may be gained by examination of the scrotum and testes, since changes in size and consistency may indicate an abnormality. It is also necessary to establish that both testes are present within the scrotum since cryptorchidism is believed to be a sex-linked autosomal recessive trait.

In the past semen was collected from dogs using an artificial vaginal similar to those used in other species. However it has been shown that the rubber liner is toxic to canine spermatozoa; this may give a misleading impression of the animals<sup>1</sup> fertility. Semen is now most frequently collected by massaging the penis using a gloved hand. The semen may then be collected into three warmed plastic test tubes via glass funnels.

The dogs ejaculate consists of three very distinct fractions. The first fraction is clear in nature and is generally small in volume (up to 3 ml). This fraction is a stored secretion from the prostate gland which is ejaculated before intromission. It probably functions to flush the urethra clear of urine and cellular material. The second fraction is white or creamy in colour and is rich in spermatozoa. This may have a volume of up to 4 ml. The last fraction is clear and can be up to 30 ml in volume and originates from the prostate gland. This fraction washes semen forwards through the cervix into the uterus.

Once collected, the second fraction is placed in a water bath to keep it warm during examination. The colour of the ejaculate should be carefully inspected. The second fraction may be watery and clear if there are very few spermatozoa present. The colour may change to a light yellow if there is contamination with urine or pus, and may be pink or red in cases of prostatic disease when there is blood present. A small amount of blood is frequently found in the ejaculate of middle aged and old dogs. This is the result of increasing prostate size which can be considered normal. Once collected a drop of the sperm rich fraction is placed onto a warmed glass slide and examined under the microscope. The assessment of the spermatozoal motility is considered by many as being one of the most important parts



---

## SEMEN EVALUATION AND ARTIFICIAL INSEMINATION IN THE DOG (continued):

of the semen examination. The semen should be assessed for the percentage of spermatozoa which have normal forward progressive motility. Normal spermatozoa generally swim in straight lines propelled by rapid movements of the tail. Spermatozoa which swim in circles or swim backwards frequently have bent tails. Most normal dog spermatozoa swim very rapidly; faster than 200 $\mu$ m per second. Most fertile ejaculates have greater than 80% normal forwardly progressively motile spermatozoa. The concentration of spermatozoa and the volume of the second fraction may vary greatly, therefore it is more useful to combine these two values and to calculate the total sperm output. Spermatozoal concentration is measured by diluting the sperm and then using a microscope to count the number present in a known volume. There is a wide range of values for normal male dogs. Dogs with normal fertility have between 36 and 630 million spermatozoa in one ejaculate.

It is important to know not only that the spermatozoa are motile and there are sufficient numbers present, but also that those spermatozoa have normal morphology. To investigate their structure the spermatozoa are fixed, stained and examined under a high power microscope. The stain used for this purpose also allows dead and live spermatozoa to be differentiated. Normal spermatozoa have a clearly defined head upon which a cap, the acrosome, is located. A small neck region joins the head to a thin tubular portion called the mid-piece. This area is responsible for producing energy necessary to propel the thin tail. There are normally approximately 80% or more morphologically normal live spermatozoa present in the ejaculate of fertile dogs.

It has been established that certain abnormalities of canine semen are related to infertility. There has however been little attention played to the normal variation in semen quality in dogs with known fertility. It is important to remember for example that there is a correlation between the size of the dog and the number of ejaculated spermatozoa. How then can one use the semen analysis to predict a dogs fertility?. This is not difficult if the dog has normal semen, or if the dog is azoospermic (produces no spermatozoa), but is more difficult in cases when semen quality is poor. An example of the range of semen quality for fertile dogs is given in Table 1.

## SEMEN PRESERVATION

There are several ways in which semen can be processed if it is to be used for artificial insemination. Fresh semen Once collected from the dog, semen can be directly inseminated into the bitch without any processing steps. Semen is kept warm in a water bath after collection whilst a brief evaluation of quality is made. In most cases only the second fraction of the ejaculate is collected and inseminated into the bitch since the third fraction has been shown to be deleterious to semen quality. At certain temperatures semen may be used for up to 12 hours and still retains its fertilising capacity. However, immediate insemination gives the best results. Dog spermatozoa are remarkably hardy in that they are able to survive for long times at room temperature.

### Diluted-chilled semen

If semen can be cooled after collection it may be stored for several days before being used. This observation was first made in 1776, when one research worker noted that when human, stallion and frog spermatozoa were cooled in snow for up to 30 minutes they became inactive but were revived upon warming. Whilst simple chilling will preserve dog semen for a short period of time, it is possible to store semen for much longer if dilution with certain solutions is carried out before cooling. Semen diluted and cooled to about 4 °C may be stored for several days before it is inseminated. The diluent used provides nutrients to the sperm, and allows the dilution of waste products to reduce their harmful effects. Damage

---

## SEMEN EVALUATION AND ARTIFICIAL INSEMINATION IN THE DOG (continued):

to the sperm may occur due to the low temperatures, however certain proteins have a protective effect during the cooling process. These proteins include substances found in egg yolk and milk. One common method is semen dilution with heat treated homogenised skim-milk. The semen is collected and diluted with the treated milk at body temperature and then cooled slowly to 4 °C. This is achieved by using insulated vials which allow cooling at a set rate. Once the low temperature is reached, samples may then be stored. This can be done in a refrigerator, or samples may be transported in a vacuum flask containing crushed ice. The ice will maintain the temperature of the samples at approximately 4 °C, but care must be taken to ensure that the samples do not get too cold. Semen may be transported within a country and between countries using this method. This is only possible where there are no quarantine restrictions upon the importation of semen. It is not possible to bring extended cooled semen into the UK, since the quarantine period for the semen is longer than its survival time. When semen is exported from the UK, the stud dog owner is usually alerted at the beginning of the bitches oestrus. This allows time for planning of semen collection and air transportation. Usually a Veterinary Surgeon will advise on the time of insemination using vaginal cytology and hormone measurements. Semen can be collected, transported and inseminated on the day it is required, although if necessary a second collection can be made.

### **Frozen semen**

If it is necessary to store spermatozoa for a long period of time the semen must be frozen. The most common reason for using frozen semen is to allow its transport between countries, or for the storage of genetic material for use in future generations. There are several methods used for the freezing of canine semen, many of which were initially developed for freezing bull semen. In general the principle involves the dilution of the semen with solutions that protect the spermatozoa during the freezing process. These solutions usually contain a buffer (to maintain the pH during the freezing process), glycerol and egg yolk (to protect the spermatozoa during freezing), sugars (to provide an energy source, maintain the osmotic pressure and protect the spermatozoa) and antibiotics. Diluted samples are cooled to 4 °C and held at this temperature to allow the spermatozoa to equilibrate with their new environment. The semen is then loaded into small plastic straws, similar to drinking straws, which in most cases contain 0.5 ml of diluted semen. The straws are then frozen above liquid nitrogen vapour, and are stored in liquid nitrogen at -196°C. Semen may be stored in this way for many years. When samples are thawed semen quality is reduced since some spermatozoa are always damaged by the freezing process. However provided that it remains frozen there will be very little change in its quality over many years.

One problem with the storage of frozen semen is that it is essential keep replacing the evaporated liquid nitrogen otherwise the samples will thaw and the spermatozoa will die. Samples must also be transported in liquid nitrogen and since this is dangerous cargo, specific containers and packaging are required. Indeed airline costs are high when frozen semen is shipped since dangerous goods certification and special handling procedures are required. The greatest problem with the use of frozen semen is that semen quality after thawing is reduced; probably most importantly spermatozoa survival time is lower. Unlike fresh or chilled semen which may survive for several days in the bitches reproductive tract, frozen spermatozoa live for only a few hours. This means that the timing of insemination is critical. It is always necessary to time the insemination by monitoring blood hormone concentrations.

### **Artificial Insemination**

Semen may be deposited easily into the vagina of the bitch. This can be done using a long inseminating



---

## SEMEN EVALUATION AND ARTIFICIAL INSEMINATION IN THE DOG (continued):

pipette which is gently introduced into the vagina up to the cervix. When semen is placed in this position spermatozoa must swim through the cervix, into the uterus and up the uterine horns. During a natural mating contractions of the vagina and uterus help in transporting semen. These contractions generally do not occur during insemination, although by stimulating the vagina some contractions may be produced. Vaginal insemination is therefore not ideal, but usually when fresh or chilled semen is used the spermatozoa will live long enough to overcome these problems. However in the case of frozen semen, vaginal inseminations are not very satisfactory since the spermatozoa do not live for long periods of time. The situation can be improved if the semen is placed directly into the uterus. This can be done surgically but many owners are unwilling to allow their animals to be anaesthetised for this procedure. It is very difficult to place a catheter through the bitch's cervix into the uterus, a technique that is simple in many other animals. This is because the bitch's vagina is long and narrow (up to 30 cm long) and the cervical opening is small, and placed at an angle to the vagina. A special insemination pipette has been developed in Norway for use in foxes. This can be used in the bitch but the technique is difficult to learn and certain bitches, especially overweight large breeds are difficult to catheterise. More recently, some research workers have been able to catheterise the cervix using an endoscope. This is a very specialised technique, and the equipment involved is extremely expensive.

### Importation and exportation

In this country litters which are the result of artificial insemination can only be registered if the UK Kennel Club has given prior permission. The permission of the Kennel Club is not required before semen can be imported or exported. There are however specific regulations set by the Ministry of Agriculture Fisheries and Food in this country, and similar organisations in other countries, which aim to prevent the introduction of infectious diseases. Import regulations vary between countries but are particularly stringent for the U.K. This effectively precludes the importation of canine semen into the UK from many countries in Europe as well as the United States of America and Asia. Import permit requirements usually include health certification before, and a set time period after semen collection, quarantine of semen until the second health examination and various blood test results.

♂♀ ♂♀ ♂♀ ♂♀ ♂♀ ♂♀ ♂♀ ♂♀ ♂♀

**Editor's Note:** Dr. Gary England is a highly regarded specialist in reproduction at the Royal Veterinary College in England.



**BACK ISSUES OF THE BULLSEYE WILL CONTINUE TO BE AVAILABLE AT \$5 PER COPY INCLUDING POSTAGE UNTIL THE SUPPLY RUNS OUT.**

Contact: Carol Beans, 12131 Arroyo Avenue, Santa Ana, CA 92705 714-544-1824  
e-mail: anakari@aol.com



***THANKS FOR THE MEMORIES.....***

**As Carol announced the end of "The Bullseye", I found myself reflecting on the many times an old issue has been pulled from the shelf.**

**In 1989, when I began my subscription, there were few resources available to those of us new to the breed. I eagerly awaited each and every issue, and was thrilled when I actually had submitted an ad and had something to share with the bullmastiff world.**

**It is because of "The Bullseye" that I made my first call to Carol. She had written an article about formula and we had a new litter (our first) in need of supplement. And of course one phone call led to another and a very special friendship evolved.**

**As I look through eleven years worth of issues, there are the happy times sharing wins and litters; the sad times with the loss of one of our dear companions; but most of all there was Carol.**

**So Carol, *THANK YOU* for all your time and efforts in providing this great resource, but especially "Thanks for the memories" and being my very special friend.**

**Connie**



## WHISKEY HILL'S FIRE IT UP

*"Elvis"*



*Ch. Tauralan Smoky the Bear x Ch. Savanna's Dutch Muffin*

In very limited showing "Elvis" has been very successful. He's shown here taking Breed from the classes over some very nice specials. We thought this win finished him, but AKC says he's shy two singles. Hopefully he will become the forth champion out of his litter within the next few months. Thank you to Connie and Bruce for loving him to pieces.

**BREEDERS:**  
Whiskey Hill  
Connie & Susie

**COMPANIONS:**  
Bruce and Connie Sturm

**OWNER:**  
Susie Borg



**CH. WHISKEY HILL'S GRUMMAN**

OFA Hips & Elbows  
Thyroid Clear



Ch. Tauralan Smoky the Bear x Ch. Savanna's Dutch Muffin

**"Grumman" is a very substantial red boy who thoroughly enjoys himself in the ring. He took BOB at the recent Sir Francis Drake Show with his sister "Embers" taking BOS. Grumman is available at stud to bitches he would compliment.**

**BREEDERS:**  
Whiskey Hill  
Connie & Susie  
(650) 588-2327

**OWNERS:**  
Michele Bellamy  
Susie Borg

CH. WHISKEY HILLS FOUR ALARM  
"Embers"



CH. TAURALAN SMOKY THE BEAR X CH. SAVANNA'S DUTCH MUFFIN

Here's "Embers" sharing the limelight with her brother "Grumman" at the recent Sir Francis Drake Show. She has matured into a lovely bitch; and will be bred to BIS Ch. Whiskey Hill's Bootlegger ("Dutch") in the spring.

**BREEDERS:**  
Whiskey Hill  
Connie & Susie  
650 588-2327

**OWNERS:**  
Crystal Habershon  
Holly Bourne  
Susie Borg





**GABE (Am/Can Ch. Hainlands Babriale DiArcangelo, CGC, TDI)** shown here at the Southern Adirondack Dog Club show winning Best of Breed. And his daughter **BIBY (Banstock Bibiana of Archangel)** winning another point towards her championship, and Best of Opposite Sex to her Dad at 12 months. **BIBY** has some pretty big paws to follow, but she is doing an outstanding job of it.

These two have brought so much love and happiness into our home. Their playful antics are sure to wipe away any frowns. **GABE** is the strong, silent type, and **BIBY** is quite vocal and spirited. We are so proud of their accomplishments in the ring, and most of all so grateful to be loved by **GABE** and **BIBY** and have them for our best friends and companions.

**GABE & BIBY wish you all a safe and Happy Holiday Season!**

***Archangel Bullmastiffs***  
***Vince & Bonnie Bianchi***

Stafford, New York  
716-343-0955



---

## Alpha Dbl Jprdy of Reprisal asks Carol: “If I stare long enough, would you reconsider?”



**CH. BIS/BISS MR. U'S MUSIC MAN x CH. KEEPER'S FIREBALL**

Thank you, Carol, for the years of enjoyment you created. We will miss our bull-filled issues. Best of luck with the home renovation and family. Farewell to a wonderful publication.....

### **Reprisal Bullmastiffs**

17648 N. Sunnyvale Drive, Nine Mile Falls, WA 99026  
509- 465-4143 or E-mail: Reprisal4u@aol.com

# Taif Bullmastiffs Proudly Introduces Taif Sudden Impact



## CH. OL WEST JESSE JAMES x DROGHEDAS ON TOP OF THE WORLD

**MAGNUM** is pictured taking his first point at the Kachina Kennel Club show on 10-29-00. Pictured here at 8 months of age, I have high hopes for this puppy. He has a wonderful personality and a lot of potential. He wants to "shake hands" with everyone, judges included!

This lovely pup of **FAIZA** and **JESSIE** is what I had hoped to achieve out of their breeding.

Breeder:

**Shanita Duke**

**Taif Bullmastiffs**

4112 E Park Street, Phoenix, AZ 85040

602-427-0892

e-mail: Taif1995@aol.com

Owners:

**Rick & Angie Crankshaw**

## PROUD PAPA LOUIE



### Ch. Bastion's Louisville Slugger

CH. BLUEGRASS BUMPTIOUS BOO x AM, CAN CH BASTION'S HELLCAT FROM HYTOP

Everyone who knows **LOUIE** can't help but love him, a truly gorgeous boy with outstanding show presence and a wonderful disposition. His babies appear to be worth of his name.

Owned By:  
**Dawn McCandless**  
**Bob & Lynn Spohr**

Breeders:  
**Bob & Lynn Spohr**  
**Bastion Bullmastiffs**



## DECKER AND LOUIE BABIES ARE HERE



### Tomboy's Ace of Hearts

CH. WILD HEARTS BARNSTORMER x CH. TAURALAN WILD HEART TOMBOY

On November 1, 2000 **DECKER** had 9 gorgeous babies, 4 boys, 5 girls. **DECKER** is a lovely substantial 25", 119 pound bitch, OFA hips and elbows, Pennhips .37/.41, kidneys and thyroid tested and clear, and not a doting mom who adores her babies.

Inquiries To: Owner/Breeder  
**Deborah Vandagriff-Marchand**  
**Tomboy Bullmastiffs**  
[DTOMBOYBULL@aol.com](mailto:DTOMBOYBULL@aol.com)  
Phone: 623-587-9372

# ALI

## ACTIONS TORNADO ALI



CH. ABBEY ROADS FULL MOON FEVER, OFA x CH. ACTIONS UNDERCOVER GIRL, CGC, OFA

**ALI** is our wonderful fawn girl, pictured going WB. **ALI** shines in all she does with a dead level topline, level bite and excellent structure and movement.

**ALI** has been bred to "**AUSTIN**", **OXFORD'S DUKE OF KINGSBURY** (Ch Avonlea Storybook Goodfella x Ch. Cohuttas Lady Annabelle) Both **ALI** and **AUSTIN**'s pedigrees combine some of the best of the breed including **CH. ALLSTARS MUGSY MALONE**, **CH. LADYBUG THORN OF THE ROSE BD**, **CH. LADYBUG ANGELICA ROSE**, AND **CH. LEATHERNECK'S BIT O HAPPYLEGS**. Puppies due Thanksgiving. Enquiries to: Maria & Terry Kane.

### MARIA AND TERRY KANE

940 Meece Mill Road, Pickens, SC 29671  
864-878-7934 E-Mail: [ACTIONBULMASTIFS@WEBTV.NET](mailto:ACTIONBULMASTIFS@WEBTV.NET)

# STRYKER

## ACTION'S THE GUEST OF HONOR



**CH. LADYBUG THORN OF THE ROSE BD x CH. ACTIONS UNDERCOVER GIRL, CGC, OFA**

**STRYKER** is pictured going BOB at 13 months of age. **STRYKER** has excellent movement, level bite, strong bone and a fun loving attitude. His prelim x-rays look good. Stud inquiries to Maria & Terry Kane.

### **MARIA AND TERRY KANE**

940 Meece Mill Road, Pickens, SC 29671

864-878-7934

E-Mail: [ACTIONBULMASTIFS@WEBTV.NET](mailto:ACTIONBULMASTIFS@WEBTV.NET)



## Silver Oaks Desert Fox



### Canadian Champion and Major Pointed

**ROMMEL** is pictured here with National Specialty judge Helene Neitch being awarded 1<sup>st</sup> in the highly competitive 12 t- 18 class. Special thanks to Debbie Vargas and most of all **ROMMEL**'s other mom Linda, without them there would be no **ROMMEL**. He. Is so special to us.

Owners:

Peter and Malinda Raby Kozel  
Linda Gugusian

[pkozel@gte.net](mailto:pkozel@gte.net)  
Novato, CA

# Silver Oaks Desert Fox



Rommel

Photo Courtesy of  
Cindi Lee Campbell



# A M e m o r a b l e B e s t B r i n d l e



## Ch. Allstar's Storybook Mr. Ed

Our thanks to breeder/judge Virginia Rowland for rewarding **EDDIE's** quality

**ALLSTAR BULLMASTIFFS**  
**Mimi M. Einstein**

377 Mt. Holly Road  
Katonah, NY 10536

Phone: 914-232-9166 E-Mail: [Allstar377@aol.com](mailto:Allstar377@aol.com)

# National Specialty! Award Of Merit



## Ch. Allstar; Storybook Mr. Ed

**EDDIE** has sired several spectacular puppies and continues to stand at stud at:

**ALLSTAR BULLMASTIFFS**  
**Mimi M. Einstein**

377 Mt. Holly Road  
Katonah, NY 10536

Phone: 914-232-9166 E-Mail: [Allstar377@aol.com](mailto:Allstar377@aol.com)

---

# Ch. Belle of The Ball O' Bullmast

## April 1989 - October 2000



**“Bounce”**

**A great lady all her life  
She will be missed**

**Pat O'Brien  
BULLMAST**



# Ch. Beethoven's Fifth Of Bullmast

## February 1991 - October 2000



**“Beattie”**

**A major force in our breeding program and  
A very special friend**

**Pat O'Brien  
BULLMAST**



# Briggan's Beringer Of Bullmast



## CH. CHEVAL BAL BRIGGAN x CH. BREA BELLE OF BULLMAST

**BERINGER** is shown taking Best of Winners at Sacramento Valley KC under judge John Ramirez. The following week he picked up a three point major under judge Lawrence Sinclair at the Del Sur KC. **BERINGER** is at stud to those bitches who would be complemented by his type and pedigree.

### OWNERS:

**John & Jody Noel**  
San Clemente, CA

### INQUIRIES TO BREEDER:

**Pat O'Brien**  
1012 Dolores Drive, Fullerton, CA 92833  
714-870-5235



In Memory of.....

## Ch. StoneBull's Night Sky, CD, CGC, ROM



March 12, 1994 - July 3, 1999

**ECHO** began to have difficulty, around May, opening her mouth to catch treats tossed to her. She was diagnosed with a malignant tumor that apparently had begun in the joint of her jaw and was traveling up the orbital arch. We made the decision not to have her undergo treatments, as the prognosis was very poor. She enjoyed her final days with us in the company of our son Adam, her niece **Molly, CH. GREYSTONE'S MOLLY MAE**, and our Rhodesian Ridgeback, **Phoenix**...all basking in the warm sunshine of a New England summer, in the mountains of New Hampshire.

Rest well my girl, for as I look up at the Night Sky, I know you are looking back...

StoneBull Bulmastiffs

Steve Krulish and Jackie Smith

116 Winch Hill Road, Swanzey, NH 603-352-7698



# TRYUMPHE



## TAURALAN TRYUMPHE TITANIA

TAURALAN TARTAN LADDIE x CH. DAJEAN SILVER HEATHER, ROM

**TINA** was in the ribbons at the National Specialty, taking 3<sup>rd</sup> place in the very large Open Brindle Bitch class. She was shown by owner Vince Grlovich. Or thanks to Judge Ann Rogers Clark and to Specialty Chair Deb Chadwick.

We want to express our gratitude to Carol Beans for this effervescent and sound girl. Watch for **TINA** as she earns her majors and get serious about her CD!

Breeder:

**TAURALAN  
CAROL H. BEANS**

12131 Arroyo Avenue  
Santa Ana, CA 92705  
714-544-1824  
[anakari@aol.com](mailto:anakari@aol.com)

Owners:

**TRYUMPHE  
LINDY WHYTE & VINCE GRLOVICH**

2061 Henderson Avenue  
Washington, PA 15301  
724-229-8846  
[Tryumphe@worldnet.att.net](mailto:Tryumphe@worldnet.att.net)



"Now its time to take a well deserved rest Carol!  
I looked forward to each and every issue of the Bullseye and treasure them all.  
Thank you so much for the wonderful years of The Bullseye.

*Kathy McAlister & Ed Brady*  
*Sedentary Bullmastiffs*  
*Hayden, Colorado*

*Sedentary's Black Ice*  
*"Owen"*



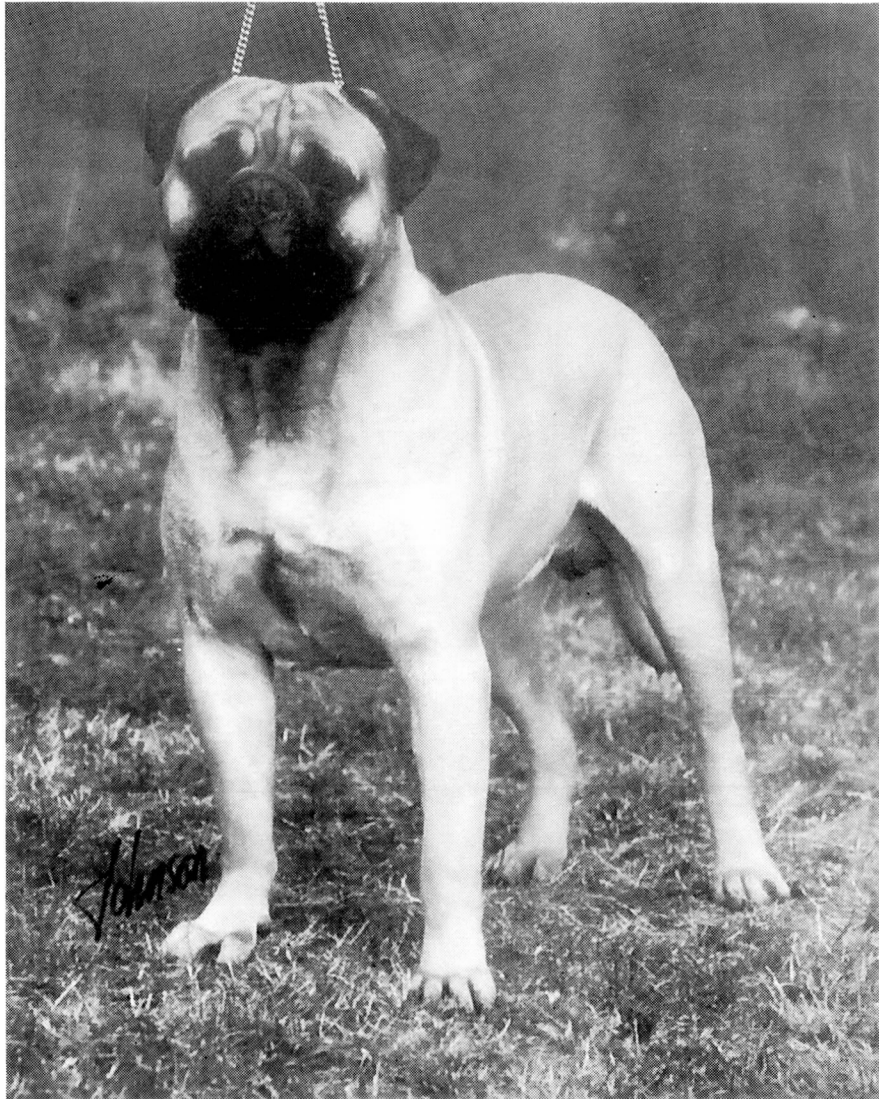
*His eyes how they twinkled! His dimples how merry!*  
*Happy Christmas to all and to all a good night!*  
*Happy Holidays!*

*Kathy McAlister & Ed Brady*



---

# Eng. Ch. Pryderi Burrunji at Chalfs "Stanley"

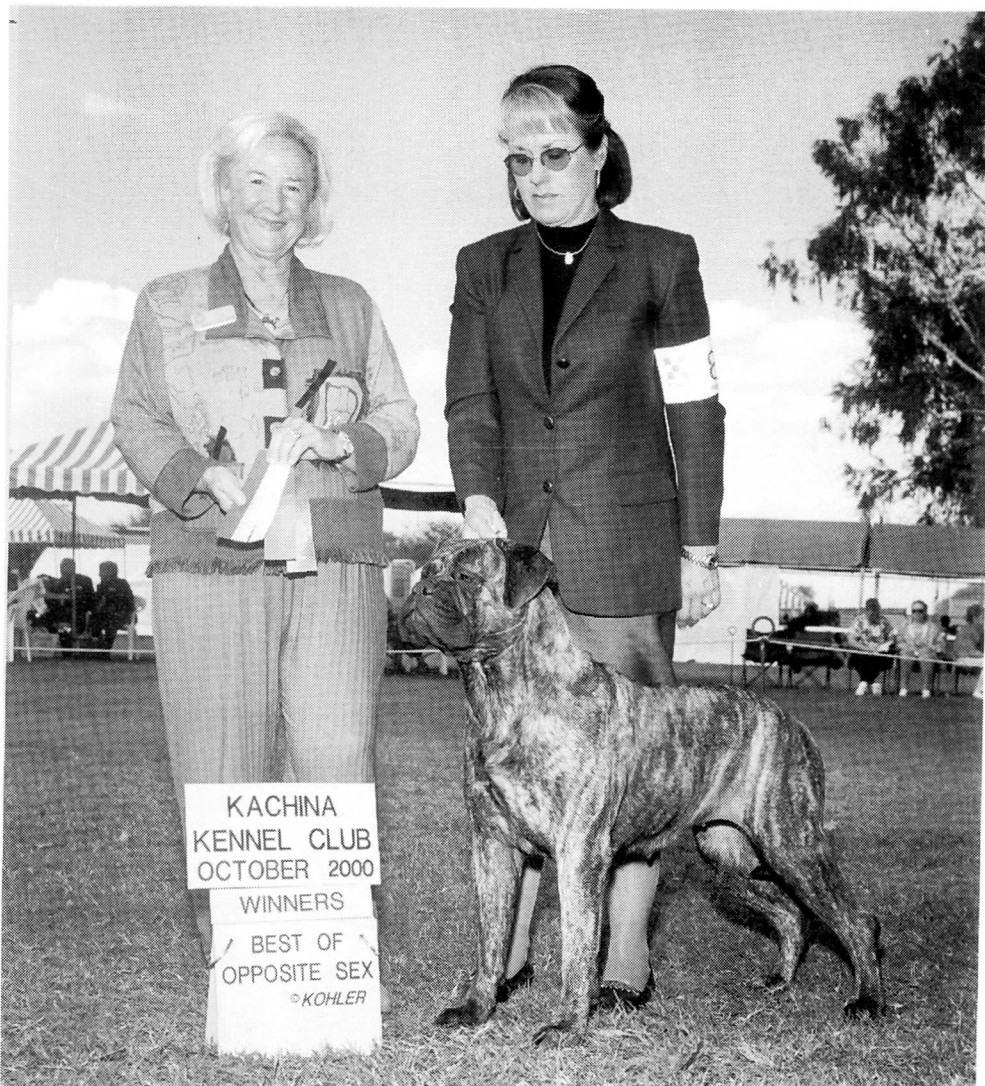


Eng/Aus Ch Pryderi Simasana x Oldwell Wayne

We would like to announce that frozen semen will be available in the U.S, from 'Stanley' and some other English dogs in the new year. For more details you can e-mail me (Grant Slater) at [chalfs@aol.com](mailto:chalfs@aol.com) or visit [www.bullmastiff.co.uk](http://www.bullmastiff.co.uk)

Chalfs Bullmastiffs  
Home of top winning dogs

# **Tauralan Torridon Ivy**



**CH. TAURALAN BEN TORRIDON x NEAFAYS TENNISON (Eng. Import)**

**IVY** is a full younger sister to **FRISCO**. She has just started showing and has four points. She is still in the growthy stage but has size, angulation, a real ground eating stride, and the sweetest temperament. The combination of her parents has produced two litters of exceptional outgoing temperament and athletic ability.

**CH. TAURALAN BEN TORRIDON** is at stud to approved bitches.

**TAURALAN**  
**Carol H. Beans**

12131 Arroyo Avenue, Santa Ana, CA 92705  
Phone: 714-544-1824 FAX: 714-730-9106 E-Mail: [anakari@aol.com](mailto:anakari@aol.com)

# ***Tauralan Toast of the Coast***



**CH. TAURALAN BE TORRIDON x NEAFAYS TENNISON (English Import)**

**FRISCO** now has 14 points and a major and hopefully will soon join a long list of Tauralan champions. Outgoing, athletic, free-moving, and handsome. He has a place in our stud program. available from this dog.

**TAURALAN CELTIC TREASURE (Ch. Tauralan Ben Torridon x Tauralan She's A Treasure)** has been bred to **CH. CHEVAL BAL BRIGGAN**. He and **FRISCO** are both sons of **ENG. CH. DAJEAN RED DRAGON**.

## **TAURALAN Carol H. Beans**

12131 Arroyo Avenue, Santa Ana, CA 92705  
Phone: 714-544-1824 FAX: 714-730-9106 E-Mail: [anakari@aol.com](mailto:anakari@aol.com)



# Ch. Tauralan Red Teddy



TAURALAN TO THE VICTOR x CH. TAURALAN TE AMO (Ben's litter sister)

**TEDDY** is warming up for his campaigning as a special next year with some really nice wins. He went BOB under breeder/judge Sheila Polk at Del Valle KC in Pleasanton, CA, following up with BOB and a Group 4 at San Gabriel KC, both under Thomas Gomez and the following day BOB at San Fernando KC under Alene Gomez. This past weekend **TEDDY** took two out of three breeds in Tucson, AZ, winning under Kimbeley Merideth and Mrs. Wanner.

**TEDDY** is at stud to approved bitches. Frozen semen available.

**TAURALAN**  
**Carol H. Beans**

12131 Arroyo Avenue, Santa Ana, CA 92705  
Phone: 714-544-1824 FAX: 714-730-9106 E-Mail: [anakari@aol.com](mailto:anakari@aol.com)

# Another Great California Summer Event

## 2001 Summerfest Supported Entries - July 6 - 7 -8

**Time to start making plans for this year's Far West Summer Spectacular!!!!**

**For those who remember last years Specialty during this show circuit,  
here's another event not to miss.**

Plan your summer vacation around this one! Ventura, California is a resort town with many beautiful broad sand beaches, sailing and fishing opportunities, a main street full of antique shops, an historic old California mission, really fine restaurants, perfect summer weather. Beautiful Santa Barbara is only a half hour away. All the relaxing beauty of the California coast and only an hour and a half from Los Angeles International Airport.

**American Bullmastiff Association  
Three Supported Entries and a Sweepstakes  
at the Summerfest Circuit  
Ventura County Fairgrounds, Ventura, CA  
July 6, 7, & 8, 2001**

Three shows in three days, all in the same location. Spacious outdoor rings. Show, sun, sail, and surf where the mountains meet the sea. Combine a vacation with a trip to the Specialty. Just a little over an hour from Los Angeles International Airport.

**Friday - Judge: Everett Dean**  
**Saturday - Sweepstakes Judge: Jeff Gregg, Specialty Judge: Lee Canalizo**  
**Sunday - Judge: James White**  
**Jack Bradshaw is show superintendent**

We have requested early morning judging to assure the comfort of dogs and exhibitors and to allow lots of time to enjoy the local sights in the afternoon. Beautiful Santa Barbara is only half an hour away.

**HOTEL: Ventura VAGABOND INN** 756 E. Thompson Blvd., Ventura 93001

Downstairs rooms have been requested in this 2 story structure. There is a pool and jacuzzi, as well as a family style restaurant which is at the front of the property.

**Rooms with 2 queen beds - \$69 + tax for up to 4**

**Rooms with 1 queen bed - \$62 + tax for up to 2**

The fee for dogs in rooms is being generously waived by the management with the understanding that dogs will be crated **at all times** when in the rooms with plastic sheeting (available free of charge) under the crates. Guests not following the very few rules placed on us for the use of this property may be asked to leave by the management. **Please make your reservations as early as possible.** Call directly to hotel at **805-648-5371**

Identify yourself as being with the Bullmastiff group

The hotel is 3 minutes from the showgrounds both Banquet and Buffet Restaurants are that distance or less.



**Saturday Night Banquet**  
at the LANDMARK NO. 78 Restaurant

Dinner will consist of a salad, choice of entree (prime rib cooked to your specification, fresh Halibut filet, apple cashew chicken, or eggplant, mushroom, roasted pepper on penne pasta, as well as potato, vegetable, rolls, beverage, and an Italian Ice Cream dessert. **Pricing for dinner will be announced in next flyer**

### **Sunday Brunch**

One of the innovations planned for this Specialty Weekend is a **Getaway Brunch** right after the judging Sunday morning. **The Holiday Inn on the Beach at Ventura** has a wonderful Sunday brunch in their top floor dining room that slowly revolves (once an hour) giving diners a total view of the beautiful coastline. This is really a wonderful meal in a very special place. For those who come in motor homes it is about a 5 minute walk from the showgrounds. This is a lovely way to conclude the events of the weekend. Instead of everyone just rushing off after the Sunday judging why not relax, dine in comfort and leisure to say goodbye to old friends and new. After this meal you won't be hungry on the way home. **Pricing for Brunch will be announced in next flyer.**

Plans are for Supported Entries on Friday, Saturday, and Sunday with a Sweepstakes on Saturday. This Summerfest Circuit has Obedience classes at all shows. There will be trophies for High Scoring Bullmastiff in Obedience on all three days. Here's an opportunity to put all three legs of a title on your dog in one weekend.

Your host club, California Bullmastiff Fanciers will do our best to see that you have a memorable weekend.

***Donations to the General Trophy Fund are welcome in any amount. If you don't specify a class or placement then your donation will be listed in the General Trophy Fund.***

**KATHY McALISTER is creating stained glass trophies for the Best of Breed, Best of Opposite Sex for the Supported Entries and the Sweepstakes.**

**To sponsor specific awards see the following list: Sponsorship is on a first come first serve basis.**

**Best of Breed - Friday, Saturday or Sunday - \$70**

**Best of Opposite Sex - Friday, Saturday, or Sunday - \$50**

**Best of Winners - Friday, Saturday, or Sunday - \$35**

**Winners Dog or Winners Bitch - Friday, Saturday or Sunday - \$30**

**Reserve Winners Dog or Reserve Winners Bitch - Friday, Saturday or Sunday - \$20**

**Best in Sweepstakes - \$70**

**Best of Opposite Sex in Sweepstakes - \$50**

**1st in any class - \$15**

**PLEASE DESIGNATE WHAT DAY AND WHAT TROPHY YOU WISH TO SPONSOR.**

***Everyone likes to go to Specialties. To put them on monetary support is necessary. Any small amount helps. Your support will be appreciated.*** Checks for the trophy fund are to be made payable to **CAROL BEANS.**

**Make all checks payable to and send to:**

Carol Beans

12131 Arroyo Ave., Santa Ana, CA 92705

More information: 714-544-1824

---

## Pieces of the Past

**Volume I Number 1 of The Bullseye was the June 1977 issue.** The caption under the cover photo said, "A journey of a thousand miles is begin with a step." ....M. Tupper. Little did I know how many miles would follow the first step of that first issue.

I thought it would be nice to include in this final issue **several articles from the very first issue.**

## The Family Dog

Linda Hagen

A dog has the potential to be a valuable and enjoyable addition to almost any family. Unfortunately, many people are not prepared to see that the dog realizes this potential.

Too often, the dog owner's lack of effort in behalf of the dog results in an unruly pet that's more of a nuisance than anything else, or at best, an animal receiving minimal attention and leading a boring existence at the end of a chain.

The neglect of the animal's well being and education isn't usually intentional; rather it stems from a lack of awareness that there is a better way, a right way, to live with a dog.

Our modern lifestyles have no place for the canine friend we enjoyed as children: the dog who tagged along with the gang of kids headed for the park, or the friendly mutt who made regular rounds with the mailman. The practice of turning the dog loose in the neighborhood before bedtime to "get some exercise" is outlawed in most areas as is walking the dog to "do his duty" somewhere other than the owner's property.

Dog owners who do not abide by the law get their dogs, and consequently, themselves in trouble. Dog owners who do not obey the laws find themselves living in close quarters with an animal who is unable and unwilling to act like a sociable human.

Therefore, the dog becomes a tolerated nuisance; banished to the basement when guests arrive, occasionally "getting herself pregnant" and running out the door and down the street, owner in hot pursuit, at least twice a week.

Some dog owners avoid all of these problems by chaining the dog to his very own dog house in the back yard where he spends the rest of his life barking at the neighbors and making a bare spot in the grass.

The shame of these situations is that not only is the dog's life a near waste, but that the family is totally missing out on the experience of really learning how the canine mind works, and of knowing a dog who is truly a loyal member of the family and actually shares the same interests and pastimes as it's human companions.

We cannot logically expect to take an animal into our home and assume that it will naturally conform to human rules of social conduct. After all, it is an animal, and already has it's own very definite rules of social conduct. The responsibility of the dog owner is to become a teacher, instructing the dog in what is, and what is acceptable, in a human's world. Some dogs require more effort than others, but there

---

## PIECES OF THE PAST (continued):

are very few who are not worth the effort. The time spent is always minimal if spent wisely and consistently

The end product is the well-adjusted, well-behaved, and truly appreciated pet. The dog cannot usually achieve this status on his own. He must depend on his owner to teach him how, and he deserves and has a right to nothing less.

*Linda Hagen is Assistant Training Director of the Car Dun AI Obedience Dog Training Club, Inc., of Carpentersville, Illinois (this was written in 1977). This group is a not-for-profit community service organization whose primary goal is to promote responsible dog ownership. To this end they hold classes at Elgin, Illinois' National Guard Armory Building and print education flyers. I wish to thank the club for granting me permission to reprint this article from one of their publications.*

## Reminiscences

**Leonard V. Smith**  
**Founder of Bullmast Bullmastiffs**

Talking with some friends the other evening, obviously about Bullmastiffs, the subject of the breed's temperament was under discussion. Items that were talked about were the breed as an attack dog and their general behavior. It has always been a habit with me at times like this to think back to dogs and incidents I knew and met in the very early days of the breed. Back in England in those days I lived only a short bus ride from the "BULMAS" kennels at Aldridge Rd., Perry Barr, on the outskirts of Birmingham. I don't remember having any other reason to visit except Mr. Leeke and the BULMAS dogs attracted me like a magnet.

Now on this particular day I saw some Bullmastiffs that were kenneled either for an upcoming show or the show had been quite recent. I can clearly remember seeing Ch. Wendy of Bulmas, one of the very early champions of the BULMAS bloodline.

As I remember it was quite a long driveway down to the kennels and Mr. Leeke and I were standing talking; or rather I fancy Mr. Leeke was talking. I always made it a rule to listen and learn whenever he was talking about the dogs. I believe a kennel maid came and spoke and Mr. Leeke left me saying he would be back shortly. Imagine my surprise when three little girls of ages I would guess from about 10 to maybe 12 or 13 years appeared and asked Mr. Leeke, "Can we take one of your dogs for a walk?" Shortly after I saw them way down at the end of the driveway with a Bullmastiff on a six foot lead and OH BOY! He was a picture. I had not seen him before but I knew that is what I wanted or better still a lot like him.

Shortly after Mr. Leeke returned saying it's good for the dog to be in the company of the children. I'm afraid I could form no sort of description of the children, but in my mind I can see the do now as he walked away with the three girls.

My next question was WHO??? was the dog!! Can you imagine my surprise when Mr. Leeke said, "That is CH. BILLY OF BULMAS. Billy was one of the very early BULMAS champions but the Bulmas type was there and also the Bullmastiff temperament. One would not hand a dog like that to the care of three little girls if he did not have what has been a feature of the breed...a reliable temperament. It should still be a feature of the breed today. Regretfully, we hear far too many incidents these days that this feature has, or is, being ruined and such animals should not be regarded as a true Bullmastiff.

---

## Preventing Eye Disorders

Marina Zacharias  
Natural Rearing Newsletter  
Vol. 2 Issue 6, May 1997

Most breeders believe that eye disorders such as cataracts, glaucoma and macular degeneration are genetic and any lines with a history of such problems should not be bred.

While there is no doubt that genetics does play a role in determining if an animal is more or less susceptible to eye disorders, there are several natural substances that have been clinically proven to help prevent the onset of such disorders.

Although many aspects of vision remain a mystery, what is known is in order for normal vision to occur, light must interact with the specialized nerve cells of the eye to create a nerve impulse. The nerve impulse is then transmitted to the brain. Many nutritional compounds are important in vision, both in terms of damage as well as the actual process of vision.

The origin of many eye diseases, including cataracts and macular degeneration, is ultimately related to damage caused by free radicals. Simply stated, a free radical is a highly reactive molecule that can bind to and destroy body components. Free radical or "oxidative" damage is what makes us age.

The health of the eye is largely dependent on a rich supply of nutrients and oxygen. Relatively speaking, the amount of blood flow through the eye is the greatest in the body. This high blood flow highlights the importance of nutrition and the circulatory system. When normal mechanisms to deliver oxygen and other nutrients to the eye begin to fail, a variety of disorders develop. Usually these are associated with aging, but occasionally they do occur in very young dogs.

Obviously if we can find a way to keep the blood capillaries in the eye healthy (so that the flow is not encumbered) and keep the collagen structures in the eye in good condition (providing the tensile strength and integrity to the tissues), with a minimum of free radical damage, most eye disorders could be prevented. To prevent capillary fragility, clinical studies have demonstrated a positive effect from using Bilberry extracts and Ginkgo biloba. In Europe, bilberry extracts are now part of the conventional medical treatment of many eye disorders.

Bilberry ( *vaccinium myrtillus*) is a member of the *Vaccinium* family that includes the cranberry, cowberry, and blueberry. Renewed interest in the medicinal use of bilberry was first aroused when it was observed during World War II that British Royal Air Force pilots reported improved nighttime visual acuity on bombing raids after consuming bilberries. Subsequent studies showed that administration of bilberry extracts to healthy subjects resulted in improved nighttime vision, quicker adjustment to darkness, and faster restoration of vision after exposure to glare.

Bilberry extracts have also been shown to provide significant protection against the development of cataracts when combined with proper diet. In one human study, bilberry extract plus vitamin stopped progression of cataract formation in 97% of 50 patients. Preliminary research suggests that flavonoid components in the diet may be in part responsible for the protective effects.

I'll cover Ginkgo biloba in another issue but for now it is enough to know that it is also very useful in various circulation problems.

Of course, antioxidants such as vitamin C, etc. can play a major role in preventing eye disorders. You should also be aware that there is a wide range of other vitamins and minerals which are known to be present at significantly higher concentrations in healthy eyes, relative to overall body levels.



PREVENTING EYE DISORDERS (continued):

For prevention, the best single product I have come across is "Ocudyne"™ made by Allergy Research Group. This product was formulated by Jonathon V. Wright, M.D. and Alan R. Gaby, M.D. and contains prime antioxidants, key amino acids and active bioflavonoids, in combination with high-potency botanical extracts of both Ginko biloba and bilberry. It also has the necessary range of vitamins and minerals mentioned above.

Of course diet is also going to play a role. Basic nutrition plays a major role in all prevention of health problems.

I am not condoning the practice of breeding lines with a genetic history of eye problems. Sometimes, however, a breeder may be reluctant to reveal that this kind of problem existed, or may honestly believe that they have eliminated the disorder from their program. Thus, if you have any doubt whatsoever that an eye disorder may be a possibility with that new puppy you just acquired, it would seem prudent to utilize a preventative measure rather than a "wait and see" method of health care.



**Right Now Recipes**  
**HOLIDAY DIPS**

**BEST VEGETABLE DIP**

- 1/4 C. toasted almonds
- 3 cloves of garlic
- 2 heaping Tbsp chopped parsley
- 4 Tbsp seasoned bread crumbs
- 2 C. mayonnaise

Put first 4 ingredients in blender or food processor and chop fine. Blend mayonnaise. Serve with an assortment of crisp raw vegetables.

**CRAB CREAM CHEESE DIP**

- 1 can flaked crab meat
- 1 large bar (2 x 5 inch approximately)  
Cream cheese at room temperture
- 1 C. catsup
- 1 tsp grated horseradish (bottled variety)
- Juice of 1/2 lemon

Rinse and drain crab meat, mix catsup, horseradish, and lemon then blend in crab. Place room temperature cream cheese on a large plate or bowl and pour crab/catsup mixture over the top. Serve with crispy crackers.



**CORRECTION:** There was an error in reporting the Best Brindle at the National.

The report should have read:

**BEST BRINDLE: CH. ALLSTAR'S STORYBOOK MR. ED - Mimi Einstein**

---

## Millenium Ramblings

by Carol Beans

This being my last issue of The Bullseye, while I've been typing, I've been doing a lot of reflecting on what was when I started in Bullmastiffs about 36 years ago and what is now. Things have sure changed a lot.

Information on the breed was sparse - real sparse. I started out looking for a Mastiff, as my husband and I are English historical novel buffs, that seemed the way to go. Then we met our first Bullmastiff at the home of a co-worker of my husband's. That did it. Our first Bullmastiff we found through a classified ad in Dog World from a breeder in Minnesota. We were just looking for a pet and the search in our area wasn't a raging success. Sarah turned out to be the dog that changed my life. She was my introduction into the world of Bullmastiffs and matters just snowballed from there. My poor husband should have known I couldn't do less than get totally immersed in anything that had to do with this breed.

At that time the East Coast and West Coast of this country might have been two foreign countries as there was very little contact among breeders and owners. It was really culture shock to go east and see the dogs there as compared to the west. The easterners didn't have to worry about culture shock. We didn't exist out here for more than a few of them so they never came out here to see our dogs.

Now our National Specialties rotate all over the country and dogs from every area are bred to and are sold to all these areas. Bullmastiff people being what they are, as hard headed as their dogs, there are still several styles in the breed rather than one distinctive type.

The quality and soundness of the breed has skyrocketed in the last 15 years. Modern science has given us tools to use to help in seeking improvement in these fields. Sometimes though I think we focus too much on statistics and not on what we should know by a careful study of the animal itself. However, I think eventually we will come to a happy balance in this.

The breed is getting a little too popular and populous to suit me. Those of us who have worked in rescue see astonishing rates of abandoned dogs and dogs whose lazy, incompetent, and/or irresponsible owners don't or won't train them and then try to dump their problems on others who do care about the breed. The number of male dogs in rescue is overwhelming. Nowadays too many people want a big guard dog, wants to treat it like a stuffed toy, and then are amazed when they have created a monster, which of course is the fault of everyone but themselves.

Way back when almost everyone in the breed knew or knew of all the other breeders. Now there are masses of people producing Bullmastiffs with no concern about where they go, just how much they can get for them.

So while we've made wonderful progress in health and type standardization, we have giant steps to take in protecting the breed before it becomes the focus of dog law fanatics because of the irresponsibility of some. Dog show wins are exciting, new litters are, naturally, all gorgeous, having top producing dogs and top winning dogs is a big ego boost. Maybe we need to think of the byproduct of all this success - the leftovers that don't have it so good.

Real success in this breed will come when the show judges are presented with only top quality dogs, when Bullmastiffs are so carefully placed that all have good, loving homes, when every person in the breed who has received something from it works to be sure that he or she is giving back just as much.

I realize that's equivalent to Utopia, but just as we strive to breed dogs that meet the standard of perfection, perhaps we can strive even harder to meet a standard of perfection for our responsibility to these dogs.

---

**BREEDERS' LISTING**

- ACTION**  
 Maria & Terry Kane  
 940 Meece Mill Rd  
 Pickens, SC 29671  
 864-878-7934  
[actionbulmastifs@webtv.net](mailto:actionbulmastifs@webtv.net)
- ADAMSWAY**  
 Sharlene & Dennis Adams,  
 DVM  
 RR#4,  
 Walkerton, Ontario,  
 N0G 2V0, Canada  
 519-881-0469  
[www.bmts.com~dadams](http://www.bmts.com~dadams)
- ALLSTAR**  
 Mimi Einstein  
 377 Mt. Holly Rd.  
 Katonah, NY 10536  
 914-232-9166
- AZAR**  
 Angie Reese  
 262 Hunt Road  
 Jonesborough, TN 37659  
 423-348--6613
- BACKDRAFT**  
 Sergio & Nikki Gonzalez  
 10631 154th Rd N.  
 Jupiter Farms, FL 33278
- BANKSIDE**  
 Deborah J. Gannett  
 7 Union Schoolhouse Rd.  
 Far Hills, NJ 079  
 908-719-2630
- BARB'ERIC**  
 E F Long & B E Long  
 180 Moore Rd.  
 Elma, WA 98541  
 360-482-5600
- BLACKJACK**  
 Vicki Allenbrand  
 1397 Peninsula Trace  
 Lawrenceville, GA 30044  
 770-638-  
 0996<http://www.pageweb.com/blackjac/>
- BLACKLAND**  
 Don & Vickie Topper  
 1380 County Road 377  
 Van Alstyne, TX 75495  
 903-482-6056
- BLAZIN'**  
 Tom & RoxanneLaPaglia  
 604 Mahan Rd.  
 Churchville, MD 21028  
 410-836-2211
- BLUE SKY**  
 Laurie Carrigan  
 16244 Schoenborn St.  
 North Hills, CA 91343  
 818-892-6246
- BO-BECK**  
 Robert Martin &  
 Becky Combs  
 838 Bailey Anderson Rd.  
 Leavittsburg, OH 44430
- BRIART**  
 Art & Barbara Heck  
 4 N. Nassau Road  
 Averill Park, NY 12018  
 518-766-2778  
 FAX: 518-766-3333
- BRYNLOW**  
 Chuck & Esther Lowther  
 33 Patton Road  
 Upper Sackville, Nova Scotia  
 B4E 3C7, Canada  
 902-864-9439
- BULHAVEN**  
 Mari Hannigan  
 59 Haddam View Heights,  
 Haddam, CT 06438  
 860-345-4698  
[Bulhaven@aol.com](mailto:Bulhaven@aol.com)
- BULLCHARM**  
 Chantel Dallaire  
 155 Manitou Rd, Box 362  
 Manitouwadge, Ontario  
 Canada POT 2C0
- BULLMAST**  
 Patricia O'Brien  
 1012 Dolores Dr.  
 Fullerton, CA 92833  
 714-870-5235
- BULLMOON**  
 Gary & Kathleen Pyles  
 3845 County Line Road  
 Brookport, NY 14420  
 716-638-6438
- BULLMOOSE**  
 June Moeller  
 P O Box 69  
 Rohrersville, MD 21756  
 301-432-7363
- BULLRUN**  
 Lynn Beanmon & Susie Martin  
 Livermore, CA 94550  
 925-373-3131  
[polkadotsm@aol.com](mailto:polkadotsm@aol.com)
- BULLY BOY**  
 Bill & Fern Dittmar  
 P O Box 241  
 Mahwah, NJ 07430  
 201-512-0128  
[bullyboybabies@hotmail.com](mailto:bullyboybabies@hotmail.com)
- CHERWELL**  
 Carolyn Young  
 Rt 2, Box 207  
 Altus, OK 73521  
 580-482-4722
- DJ**  
 Jeannie Crafton  
 2376 E. Sierra  
 Tulare, CA 93274  
 209-688-4670
- DOX**  
 Dr John/Susan Crawford  
 505 N. Ridgeland Ave.  
 Oak Park, IL 60302  
 312-524-9788
- DREADNAUGHT**  
 Jeannie & Rick Stacey  
 P O Box 1327  
 Visalia, CA 93279  
 559-337-2803  
[dreadnaughtbullmastiff@spiralcomm.net](mailto:dreadnaughtbullmastiff@spiralcomm.net)
- ELOC**  
 Gerald & Karen Cole  
 P O Box 366  
 Bristol, VA 24203  
 703-669-3273
- ESHAF**  
 eIVERNa Fahse  
 P O Box 531  
 Benton, IL 62812  
 618-435-2557
- EVERLOYAL**  
 Dan & Evy Malinowski  
 721 Morita Drive  
 Corona Hills, CA 91719-6125  
 909-278-0332
- EXCALIBUR**  
 Rebecca Mello  
 613 W. Grayson Road  
 Modesto, CA 95358
- FAR ISLE**  
 Joseph Matano  
 20 Marc Drive  
 Howell, NJ 85283  
 732-901-9465  
[FarIsleBM@aol.com](mailto:FarIsleBM@aol.com)
- FENRYR**  
 Dan Burke  
 7528 Hamil Court  
 Sacramento, CA 95828  
 916-688-8440
- GOLD BARS**  
 Michelle Harms  
 28075 CR 35  
 Holyoke, CO 80734  
 970-854-3912
- GRANITERUN**  
 Joan Hopkiins  
 RRI Campbellford, Ontario  
 Canada K0L 1L0  
 705-653-1809  
 FAX 705-653-1630  
 e-mail: graniterun@accel.net
- GRAWEL**  
 Candy & Fred Welch  
 1702 Nursery Hill Rd.  
 Columbia, SC 29212  
 803-781-6393
- GUARDMAN'S**  
 Larry V. Occhipinti, DVM  
 18200 Sycamore Ave.  
 Patterson, CA 95363  
 Work - 209-892-8387  
 Home - 209-892-5975
- HANOVER**  
 Chuck & Ginger Koepke  
 P O Box 163, 300 Hanover  
 Okawville, IL 62271  
 618-243-9006 or 243-6244
- HAPPYLEGS**  
 A. Kalter & C. Lezotte  
 6283 Hellner Road  
 Ann Arbor, MI 48105  
 313-741-7326
- HIGH HILL**  
 Barbara Shoneck  
 491 High Hill Rd  
 Meriden, CT 06450  
 203-634-8771
- HY-BULL**  
 Larry Hyer  
 Rt 11, Box 132  
 Lubbock, TX 79407  
 817-866-2016
- INXS, Reg'd**  
 Steve Bodnaruk  
 7312 34 Avenue NW  
 Calgary, Alberta T3B 1N4  
 Canada  
 403-270-8648 or 286-7267
- IRONGATE**  
 Ralph & Lucile Kapple  
 210 Spring Hill Rd.  
 Petaluma, CA 94952  
 707-762-2304

---

**BREEDERS' LISTING (continued)**

**IRRESISTA-BULL**  
Dorothy & Michael Kaye  
15 Radford Lane  
Boston, MA 02124  
617-288-1519

**JAWLE**  
Janet Jaworski  
5955 Camino Baja Cerro  
760-757-5578 Ph. & FAX  
jawle@pacbell.net

**KILROY**  
Doreen & John Hodgins II  
P O Box 750413  
Petaluma, CA 94952  
707-775-3656

**KINGSLYNNE**  
Christoper & Karen Campbell  
1120 Greene Lane  
Yuba City, CA 95993  
530-822-9844

**KORIK**  
Deneen Newport  
Scott Fraser  
4751 Conc. Rd. #3  
Newtonville, Ontario  
LOA 1J0, Canada

**LADYBUG**  
Gerry Roach  
620 South Hill Street  
Amarillo, TX 79104  
806-374-3254

**LEATHERNECK**  
Jean Robinson  
631 N. County Rd. 700 W  
Frankfort, IN  
46041-7015

**LONDON BRIDGE**  
Peter & Cynthia Ryan  
17327 Pink Dogwood Ct.  
Mt. Airy, MD 21771  
410-795-8955

**LOOKOUT**  
Shannon Keim  
400 Lake Markham  
Sanford, FL 32771  
407-302-3503  
Lookout909@aol.com

**MOONMAGIC**  
Cindi-Lee & Barry Campbell  
RR 1, 9195 River Road  
Westfield, NB EOG 3J0  
Canada  
Ph: 506-757-8394  
FAX: 506-757-8377

**NITESTALKER**  
Vickie Lang  
3624 Lanier Drive,  
Baton Rouge, LA 70814  
504-928-1503

**NIX**  
Rick Blanchard  
143 Grove Street  
Pascoag, RI 02859  
401-568-4292

**OAKRIDGE**  
Ira C. Kaplan, D.V.M.  
Anita M. Migday, D.V. M.  
334 Concord Street  
Framingham, MA 01701  
508-875-7086

**PATRIOT**  
Jan Poulton  
25626 Oaks Blvd.,  
Land O' Lakes, FL 34639  
813-873-7030

**PRAETORIAN**  
Clark & Sandy Frontin  
P O Box 308  
Montgomery Crk, CA 96065  
916-337-6245

**REDROCK**  
Denise McCollum  
32453 22<sup>nd</sup> Avenue S  
Federal Way, WA 98003  
253-815-9379

**REGENCY**  
Rhea B. Kutnick  
2245 Lancaster Road  
Akron, OH 44313  
330-836-1751

**REPRISAL**  
Tamara & Carey Cady  
2112 Haniman Drive,  
San Diego, CA 92105  
619-263-3214

**ROYAL**  
Michael Wayda,  
Denyse Kruger  
1219 Regent Street  
Madison, WI 53715  
608-273-4019  
FAX: 608-273-4019  
RoyalBMFF@aol.com

**RUFFINI**  
Betty Ruffini  
Sandy, Utah  
801-619-9495  
FAX: 801-619-9497  
E-mail: Ruffbullmastiffs@  
uswest.net

**SEDENTARY**  
Kathy McAlister  
Box 549  
Hayden, CO 81639  
970-276-3196

**SEMPER FI**  
Jane Fleming  
2587 Willowbrook Cir.  
Birmingham, AL 35242

**SHERWOOD**  
Mary Frazer  
400 Forest Street  
Rockland, MA 02370  
781-871-1250

**SHILO**  
Helen Davis  
P O Box 7211  
Reno, NV 89510  
702-673-3167

**SOUND OFF**  
Lea Reuter  
P O Box 236  
Fort Jones, CA 96032  
530-468-5899

**STONEBULL**  
Jackie Smith &  
Steve Krulish  
116 Winch Hill Road  
Swanzey, NH 03446  
603-352-7698

**STORYBOOK**  
Debbie & Ken Vargas  
1867 Sunnyside Avenue  
Highland Park, IL 60035  
847-831-2042

**TAIF**  
Shanita Duke  
4112 E. Park Street  
Phoenix, AZ 85040  
602-437-0892  
[taif1995@aol.com](mailto:taif1995@aol.com)

**TAURALAN**  
Carol Beans  
12131 Arroyo Ave.  
Santa Ana, CA 92705  
714-544-1824  
FAX 714-730-9106  
E-mail: [anakari@aol.com](mailto:anakari@aol.com)

**THUNDERLOVE**  
Mr & Mrs Jerry Minks  
11428 64 Street  
Edmonton, Alberta  
Canada T5W 4H7

**TOROUS**  
Bud & Pauline Smith  
P O Box 1415  
Oakhurst, CA 93644  
559-683-8537

**VON HADDON**  
Carole Haddon  
7465 Gabarda  
Atascadero, CA 93422

**WATERS EDGE**  
Ben & Sharon Baratto  
Rte 3, P O Box 262 B  
Winona, MN 55987  
507-452-8456

**WHISKEY HILL**  
Connie Urbanski  
& Susan Borg  
701 Linden Avenue  
San Bruno, CA 94066  
650-588-2327 / 650-697-7074

**WILD HEART**  
Taun Brooks & Marilyn DeCair  
56372 Paseo Las Ninas  
Yucca Valley, CA 92284  
760-369-2400  
[wildheart@eee.org](mailto:wildheart@eee.org)

**WILD WEST**  
Brian & Tracy Ferrick,  
15455 Rockwood Rd.  
Escondido, CA 92027  
760-745-5756  
[wildwest@bullmastiff.com](mailto:wildwest@bullmastiff.com)

**WIL-O-WAYS**  
Gwen Bader-Spong  
6196 Ehler Ave., SE  
Delano, MN 55328  
Phone: 612-972-2752  
FAX: 612-935-1823

**Y-NOT**  
Tammy Rhodes  
4283 S 5275 W  
Hooper, UT 84315  
801-731-5653

*Donated to ABA ARCHIVES in  
Memory of Marilyn Cather  
Catherwood Bullmastiffs  
By V. Grlovich & L. Whyte*