

American Bullmastiff Association Archives Committee

The Bullseye

Marilyn Cather Digitization Project
- generously funded by Lindy Whyte and Vince Grlovich

ABA Bulletins digitized with club permission
Bullseyes and Pedigree Pictorials published by Carol Beans and digitized with permission

The Bullseye



NEWS FOR, OF AND BY BULLMASTIFF FANCIERS

VOLUME XIV NUMBER 2

OCTOBER 1990



To loaf is a science, to loaf is to live.

.....Balzac

TABLE OF CONTENTS

A PERSONAL OPINION ON TRAINING BULLMASTIFFS - Mona Lindau-Webb 3
 DIET AND DANDRUFF - from Dog World 4
 SAVING DOGS THROUGH BETTER BEHAVIOR - Companion Animal News 4
 AIRLINE TRANSPORTATION UPDATE - Priscilla Benkin 5
 BULLMASTIFF ADS 12 through 33
 PROTECTING YOUR KENNEL NAME - Janet Morris 34
 1990 A.B.A. NATIONAL SPECIALTY - Carol Beans 37
 NATIONAL SPECIALTY WEEKEND SUPPORTED ENTRY 40
 NATIONAL SPECIALTY VIDEO 41
 RIGHT NOW RECIPES 41
 LYME DISEASE VACCINE 42
 PERTINENT PEDIGREES 43
 BREEDERS' LISTING 44

The Bullseye is published bi-monthly in August, October, December, February, April, and June.

News, articles, ads, and anecdotes are welcome. They are subject to editorial approval.

Advertising is accepted at the discretion of the editor.

Opinions expressed and claims made are those of the author and may or may not be the opinion of the editor/publisher.

Editor-Publisher
 MRS. CAROL H. BEANS

December Deadline
is
November 10th

SUBSCRIPTION RATE: \$20 PER YEAR
ADVERTISING RATES:

Full page, color bold print with picture	\$55.00
Full page, black bold print with picture	\$40.00
Full page, color bold print no picture	\$40.00
Full page, black bold print no picture	\$30.00
Half page, color bold print with picture	\$35.00
Half page, black bold print with picture	\$25.00
Half page, black bold print no picture	\$10.00

ADDITIONAL PICTURES PER PAGE EACH \$12.00

50 REPRINTS OF FULL PAGE AD \$15.00

SEND ALL MATERIAL TO AND MAKE ALL CHECKS PAYABLE TO:

THE BULLSEYE
 12131 Arroyo Avenue, Santa Ana, CA 92705

A PERSONAL OPINION ON TRAINING BULLMASTIFFS

By MONA LINDAU-WEBB

Over the past 9 years I have put 24 titles on 4 of my own Bullmastiffs. The titles include all aspects of training: breed championships, tracking, obedience, and protection; within the AKC and outside of the AKC. In addition, as a dog trainer, I have helped train numerous other Bullmastiffs to become better family dogs. I think this entitles me to have an opinion on the Bullmastiff as a working dog.

So, here is my opinion on raising and training a Bullmastiff: it ain't easy folks!

The reason why training a Bullmastiff is a somewhat more than average arduous and demanding task has to do with the personality and temperament of the dog. The prerequisite for an easy-to-train dog is that the dog is dependent on and willing to please the handler. This is why breeds like the Golden Retriever, the Border Collie, the Shetland Sheepdog do so well in obedience competition. They were bred originally to work under the command of a handler, and these traits are abundantly present in many specimens of these breeds. By far the majority of the OTCHs awarded by the AKC go to these breeds. So far, there is no Bullmastiff OTCH.

The most typical trait of the Bullmastiff, however, is independence. What the typical Bullmastiff is willing to please is him/herself. The typical Bullmastiff is an intelligent, confident, self-respecting, headstrong, stubborn, bumptious, and independent son/daughter of a bitch. And this is probably why we love the breed. We love his independence and ability to cope with any situations. We adore his confidence and pride in himself. We get exasperated by his headstrongness - but we secretly admire it. We laugh at his intelligence when he designs his own personalized ways of doing the obedience exercises. Although some other breed's willingness to please makes it easier to train; life with a Bullmastiff certainly makes life more interesting.

Certainly there are Bullmastiffs who are willing to please. Sweet Duchess shared our lives for more than 10 years. She lived to please us, and she did very well in obedience competition. If you have one of those, enjoy! Our second Bullmastiff, Vicki, very quickly taught us about the more typical, independent Bullmastiff personality. With her, I went through several very different training methods, and in the end she had me perfectly trained to her specifications.

The standard class training method makes use of a combination of corrections and verbal praise, maybe some treats. This works well on most dogs. Bullmastiffs do not take well to corrections. Some Bullmastiffs respond by sticking out their lower lip, sulking, and turning into sloths. The Bullmastiffs choose to ignore corrections, they seem to have absolutely no effect. The verbal praise often has no effect, either. The dog very quickly understands what you want, but he tends to make up his own mind whether to obey you or not. An alternative training method is motivational training, using treats and praise to train the dog, with very limited use of corrections. This method works better on Bullmastiffs. The drawback of this method is that it takes considerably longer to train the dog, and it takes more skill on the part of the trainer. Also, the Bullmastiff very soon takes full advantage of the situation, and will perform only when he feels like indulging you. He may do a superb job, he may be atrocious. He is often quite inventive. While motivational training produces a happy working Bullmastiff, it does not produce much performance reliability.

Given the Bullmastiff's personality traits the best method for training is a combination of motivational training with superbly timed, hard, quick corrections when needed. If you teach by motivating the dog to do the exercises, and correct the moment the dog says, "Nah, not right now.", you could get a reasonably well trained Bullmastiff, who will indulge you most of the time by performing well, and who will invent his own way of going through the paces some of the time. And I guarantee you will have an interesting time training together.

DIET AND DANDRUFF

Reprinted from DOG WORLD, September 1990
Science and the Dog

Veterinarians usually prescribe an increase in dietary fatty acids to combat dandruff, which is caused by insufficient moisture in the skin. Recently, however, they have found that certain fatty acids are also associated with skin inflammation.

Dr. Karen Campbell, a veterinary dermatologist at the University of Illinois College of Veterinary Medicine in Urbana, has been studying different supplemental oils to determine which ones are most effective in decreasing skin inflammation.

Campbell found that sunflower oil helped decrease dandruff symptoms in the animals studied; not all animals were cured completely, but even the most severely affected showed marked improvement. Sunflower oil contains high concentrations of linoleic acid, which helps maintain moisture and has been found deficient in animals with scaly skin.

Animal fats contain linoleic acid too, but they also contain arachidonic acid, which is thought to cause the inflammation. Campbell, who is continuing research on other vegetable oils and fish oils, warns owners to consult a veterinarian before treating their dogs. Some dandruff is due to hormonal problems, and increased fat levels could cause trouble. (Tania Banak, University of Illinois College of Veterinary Medicine)

oo

SAVING DOGS THROUGH BETTER BEHAVIOR

Companion Animal News, Summer 1990
Morris Animal Foundation Newsletter

If a disease killed five million dogs a year, owners would be clamoring for help. Yet an estimated five million dogs are put to death each year for behavioral problems--and their owners, not knowing where to turn for help, pass the sentence.

Because saving dogs' lives is Morris Animal Foundation's business, the Foundation soon will launch it's first behavioral projects. Work will begin with continuing education programs for veterinarians and veterinary hospital staff, and as funding becomes available, move into university grants and residency programs to train veterinarians.

The behavioral work is made possible by a gift from Daver/Diamond Scientific, which has pledged a portion of its sales from the Promise System™, a training harness and manual designed by R. K. Anderson, D.V.M., professor and director emeritus of the Animal Behavior Clinic

University of Minnesota, and Ruth Foster, past president of the National Association of Dog Obedience Instructors. (See article on Promise in Summer 1990 Companion Animal News)

Dr. Anderson, who volunteers as a behavioral consultant for Morris Animal Foundation, will assist the Foundation in preparing a continuing education program for veterinarians. Few veterinary colleges offer behavior as an area of specialization, so many veterinarians have only limited professional training in this field. Yet it is the veterinarian who should be the first step in solving behavioral problems, as only a trained veterinary practitioner can distinguish between problems which have a medical versus a behavioral origin. Soiling in the house, for instance, may stem from a bladder infection--or it may be a dominance ploy. Aggression may stem from pain, such as that caused by pressing on the back of a dog with hip dysplasia or spinal problems.

Veterinarians and their support staff can help clients make these distinctions, then, with experience and behavioral training, recommend behavior modification techniques which may make it possible for the client and dog to live together. Once clients better understand canine behavior, how and when to change it, they will enjoy their animals more. Such education may save the lives of millions of dogs.

AIRLINE TRANSPORTATION UPDATE

by PRISCILLA BENKIN

THE HISTORICAL ASPECT

American Dog Owners' Association (ADOA) first became involved in the efforts to improve the lot of live animals in domestic air transportation in 1974. In May of that year, when Duncan Wright's plane was fogged in Sacramento, he asked me to attend a hearing in his place. I always assumed he asked me because I lived close to the Civil Aeronautics Board in Washington, D.C.

However, the project remained mine after the fog lifted! For the past fifteen years we in ADOA have amassed probably the greatest amount of information ever put together concerning the air shipment of dogs. We did this both to protect the dogs belonging to our members and to improve the conditions under which all dogs travel.

We have been fortunate in having established good working relationships with many of the carriers, the Air Transport Association and the principal manufacturers of domestic aircraft, Boeing, McDonnell Douglas and Lockheed. We sent many types of crates to an environmental test laboratory. We learned and this brochure is the result.

For many years you have called us with your comments and your problems. The past twelve months have been the worst for dog problems in our experience. This information is distributed to you in hopes that the next twelve months will be happier for our dogs and for us.

WHAT CAN YOU EXPECT?

When you ship a dog, whether as air freight or excess baggage, what can you expect?

You can expect that the carrier will adhere to the Federal Regulations. These are available through your Congressman or through the local office of the United States Department of Agriculture (USDA). The office is listed in the Government section of your telephone book, under USDA, Animal Plant Health Inspection Service (APHIS).

Some of the regulations may seem superfluous. Why should a dog in a standard airline kennel need a sticker that says "LIVE ANIMAL"? Surely, any airline employee knows what is in an airline kennel! But, what if the dog is in a legal but not standard kennel? When you read the federal regulations under the Animal Welfare Act, you must realize that not every dog travels the way yours does.

Beyond the regulations, what can you reasonably expect?

When we began this project in 1974, we were told by a carrier representative that we wanted soft lights and music. We have never been so unrealistic. However, we do believe that we should get what we pay for. When you ship a dog as excess baggage or air freight, you pay for the extra service the carrier alleges the dog needs.

We believe that the training video produced by American Airlines is titled, "Not Just Another Suitcase", and that's appropriate. That is the level of service you should expect. If the airlines take the attitude, as some have, that your dog is just another piece of baggage, then why do we pay surcharges? On most airlines, the air freight charges are double customary rates; for excess baggage you will pay \$50

AIRLINE TRANSPORTATION UPDATE (continued):

on United and \$30 on most other carriers. The difference in excess baggage rates does not reflect the level of service offered. Some carriers charge double or air freight rates for large dogs travelling as excess baggage. This is probably the most fair charge in the industry, since large dogs, usually pegged at 100+ pounds, including the weight of the kennel, require additional personnel and equipment.

We recently asked an executive at a major carrier just what expense the carrier incurred on dogs travelling in the cabin with a passenger beyond the cost of an agent's writing out a charge slip. He replied that the only additional cost was the expense of answering letters of complaint from other passengers aboard the aircraft. **THIS IS AN EXPENSE WE SHOULD BE ABLE TO REDUCE!** Dogs carried on board the aircraft in under-seat carriers are supposed to remain in the carrier under the seat in front of you. If this privilege is abused, the possibility of transporting young puppies and small dogs in this way will be lost.

Since most carriers self-insure against claims, part of what we pay to transport dogs goes to pay the claims. This is possibly an explanation for the additional charges by United since United's current record is the worst in the industry. This puts us in the strange position of paying more for less service. The victims, or the owners of the victims, fund the carrier's negligence.

Generally, your dog should be treated as a piece of baggage, only better. Dog kennels should not be placed on conveyer belts except to load the aircraft. When the dogs are transported from the terminal to the plane, the kennels should not have baggage heaped on top of them. They should be protected in inclement weather.

When you ask your carrier personnel to check on the whereabouts of your dog, whether air freight or excess baggage, you are asking them to provide the extra service for which you are paying. If your requests are reasonable, carrier personnel should respond. For example, my own Corgi was taken off the aircraft when we returned to Denver from Westminster, and then put on another aircraft for a trip back to New York. Because United personnel refused to listen to me when I told them I knew the dog was on the aircraft--they literally walked away from me-- whenever I fly into Denver with her on United, I ask the station from which I embark to notify Denver Lost and Found that the dog is on the aircraft, that she does not want to go on to New York, Chicago, Philadelphia or other places, that she wishes to join me in Denver. When I explain events and point out that I am paying them well for transporting her, they do it. I do not ask for this service on any other carrier or at any other station.

You have the right to expect your dog will be brought to you within a reasonable time after the aircraft is at the gate. This varies by station, by carrier, by time of day, and sometimes, we feel, by cargo handler.

We have never understood why dog kennels are placed in the odd baggage area after skis, golf clubs and kiddie car seats--all of which travel free. Recently, we have begun to ask this of baggage claim agents when we are travelling with our dogs. In most cases, agents have agreed with us, which results in our dogs being brought in before the rest of the odd baggage.

A WORD OF CAUTION--since most carriers will not interline dogs, this means if you have a dog travelling air freight onto a connecting flight which is canceled, your dog will have to wait for another flight on the original carrier even though the passengers on the same flight may be transferred to a

AIRLINE TRANSPORTATION UPDATE (continued):

different carrier.

IN SUMMARY--you are paying extra, whether excess baggage or air freight, for your dog and you should receive reasonable extra service.

AIRCRAFT ENVIRONMENT

What is it like where your dog travels?

There are no hard and fast rules. For every statement, there are some small exceptions. But, in general, in most narrow-body aircraft, the aircraft with one aisle--this includes the 727, 737, DC8 and 9, MD80, the aircraft that form the bulk of the domestic fleets--the dogs travel in compartments without airflow and very minimal climate control. These are class C or D compartments by FAA regulations and do not have airflow for fire prevention.

Some 757s, which are narrow-body aircraft, do have airflow, but there are not a lot of 757s in service.

Dogs survive on the air that is in the cargo pit when the door is closed and on the air which leaks around the door seal when the aircraft is in flight. There is a limit to the number of dogs any cargo pit can safely hold. The number varies by the size of the dogs, etc. Presumably the airline load planners take these factors into account.

On most wide-body aircraft, freight is containerized, and there is limited bulk space in which to load dogs. The bulk compartment on most 767s does have airflow, making this the safest plane on which to ship your dog. The L-1011 also has airflow, but there are not a lot of L-1011s in service. The DC-10's capacity for carrying live animals varies according to the model.

While there are preferred pits for loading live animals, these decisions are best left to the airlines.

By and large, dogs are safer on wide-body aircraft, especially the Boeing 767. But once any aircraft is aloft, the temperature in the cargo pit cools rapidly because of heat loss through the aircraft skin, since the ambient temperature at cruising altitudes is well below zero. THEREFORE, THE DANGEROUS PERIOD IS THE TIME THE AIRCRAFT REMAINS ON THE GROUND AFTER THE CARGO PIT DOOR IS CLOSED IF THE TEMPERATURE OUTSIDE IS HIGH. Aloft, the dogs cruise in cool comfort.

HOW THE CARRIERS COMPARE

The skies are no friendlier on United Airlines than on any other carrier, and the ground handling is considerably worse.

For the past fifteen years, we have resisted rating carriers because conditions vary between stations and ratings can change rapidly. However, the situation is currently so lopsided that these ratings should provide guidelines in selecting flights.

We rate carriers not only by how often problems arise but also how personnel respond to problems.

As of August, 1989, we rate the major carriers thus:

AIRLINE TRANSPORTATION UPDATE (continued):

At the top, AMERICAN AIRLINES--This carrier, which four years ago we ranked at the bottom, wants our business and acts accordingly. Now the nation's largest carrier, American's expansion has not been at the expense of service. We think this reflects the attitude of American's management.

Also vastly improved, NORTHWEST ORIENT--Again, a carrier we would have rated low a few years ago, we have not received complaints against them for some time.

CONTINENTAL--Again, a carrier we perceive as improving rapidly. The management seems to care. We especially appreciate being able to call air freight directly rather than a central "800" number. In fourth place, DELTA--With good service overall, but little mistakes and their lack of response to them ranks them lower than the above.

In the middle--EASTERN, PAN AM, US AIR, followed by TWA.

Next to last, Piedmont, whose employees' actions increased the suffering of a dying dog. Piedmont employees shirk responsibility for their actions and gloss over their mistakes.

The worst: UNITED AIRLINES--The carrier we rated best three years ago has forgotten we pay for extra service for our dogs. As previously mentioned, United charges \$50 for excess baggage dogs (compared to \$30 for the other carriers) and has accounted for half of the serious problems brought to our attention in the last 12 months. One senior USDA official says he is "bombarded" with complaints against United. When something goes wrong, United employees walk away.

Certainly some will disagree with these ratings. They are based on serious problems brought to our attention between July 1988 and July 1989. If you have a choice between similar flights on competing carriers, we hope these ratings will help you select your flight.

COMPENSATION

When something goes wrong, what can you collect?

The answer is that no one knows for sure, and it varies from carrier to carrier, from station to station and often seems based on guidelines known only to one particular claims agent.

A carrier who made no offer to a passenger injured while going down an emergency evacuation slide, paid \$2,000 for a pet Golden Retriever which died of heat prostration while travelling excess baggage with its owners.

A carrier pays a young farmer in North Dakota \$200+ for the loss of a Rottweiler for which he paid over \$10,000 in Germany, then pays me \$300 as a result of their mistreatment of my Corgi without ever asking me to furnish proof that I had incurred the expenses.

You have far more chance of collecting if you are reasonable in making your claim. We recently had brought to our attention a case in which a bitch shipped for breeding was seriously (more than six hours) delayed. Her owner asked for reimbursement of the cost of a shipping and a veterinarian's bill (for a checkup after the bitch finally arrived at her destination). These were reasonable requests.

AIRLINE TRANSPORTATION UPDATE (continued):

She then wrote us asking if she could also recover the stud fee and the loss of a litter of average size. If she did not pay a stud fee, she should not anticipate a litter, and even if she did pay a stud fee, no one could guarantee her a litter. If the airline were to reimburse her for those anticipated puppies, and the bitch did whelp, would the puppies then belong to the airline?

There is no answer to the question raised initially in this section. If you accept a check from the carrier, you cannot later ask for more. Several carriers have fought claims on the grounds of contributory negligence for shipping dogs when the temperature is excessively high.

Rumors abound regarding huge settlements carriers have paid for animal claims, but we know of only one VERIFIED five-figure claim. That was for a hearing-aid dog, and since the carrier's offer was half again what the attorney had decided to settle for, he advised his client to accept the offer.

HOW TO SHIP YOUR DOG--TEN EASY STEPS: AN UPDATE

Carefully. Very carefully.

Air travel is generally safe for animals. With more than a million animals in the air worldwide every day, according to Air Transport Association estimates, the mortality rate is less than one tenth of one percent. **WHEN SOMETHING GOES WRONG, MOST LIKELY THE PROBLEM WAS PREVENTABLE.** The following is a list of suggestions to help you travel safely with or to ship your dog. Combined with common sense and a willingness to put your dog's needs before your own, these will help ensure your dog has a smooth and uneventful flight.

ONE: There are four different ways to ship your dog. Air freight works from a different counter than passenger service. This is when your dog travels alone. Excess baggage is when your dog travels with a ticketed passenger. Small package service works from the passenger ticket counter but is for dogs travelling alone. Not all carriers accept dogs on their small package service. Some carriers allow passengers to carry dogs on board the aircraft if they can fit in carriers small enough to fit under the seat. This limits the container to approximately 8" in height. Except for pets travelling in the cabin, on almost every domestic flight, dogs travel in the same cargo pit on the aircraft, regardless of the manner in which they are shipped.

TWO: Put your dog in the safest crate you can find. Generally this is the standard white plastic (they are not fiberglass) crate manufactured by Dorskocil Manufacturing Company of Arlington, Texas, and sold as the "Sky Kennel" or "Vari-Kennel". When ADOA sent several different types of crates to an environmental testing laboratory, the Dorskocil crate was called "the best box on the market". In addition, this crate has the protruding rim required by federal standards. This rim could save your dog's life. It keeps the ventilation openings free from obstruction. The crates should be assembled with the nuts on the top, the bolt running from bottom to top. That way you can see immediately if any hardware falls off. The last thing to do before you tender your dog to the carrier is check the hardware. There are other safe and acceptable crates. However, some of the collapsible metal crates lack that all-important protruding rim. All crates must be large enough for the dog to sit, lie down and make normal postural adjustments. I secure the door of my airline kennel with a bungee cord when I fly.

THREE: All states require that dogs being brought into the state have some form of health

AIRLINE TRANSPORTATION UPDATE (continued):

certificate, even if it is only proof of rabies. Get this from your veterinarian as close as possible to your date of travel, and never more than 10 DAYS before the date of shipping. If you think the temperature at either end of your flight might be below 45 degrees, ask your veterinarian to write on the health certificate, "I certify this animal is acclimated to temperatures below 45 degrees." Dogs must be at least eight weeks of age before they are shipped interstate.

FOUR: Use common sense when you pick your flight. Nonstops are best; then come direct flights (which make stops that do not involve a change of aircraft). If you are fortunate enough to live near more than one major airport, compare flights from each. Generally dogs are safer flying when the ambient temperature is below 85 degrees, although the USDA regulations apply that maximum to freight terminal holding areas rather than outside temperature. Still, it is a good guideline to use. If possible, avoid flights between 4:30 and 6:30 p.m. since this is generally the busiest time of day. Flights are subject to more delays. This is also true of holiday weekends.

No aircraft can hold an indefinite number of dogs. As a general rule, the larger the aircraft, the more dogs it can safely carry. The load limit is influenced by other factors: how much other cargo is in the compartment, the ambient temperature, the weight of the dogs, etc. Most narrow-body (one-aisle) aircraft can safely carry only a few dogs. Therefore, if you want to travel with your friends, meet them at the end of the flight rather than put your dogs at risk.

FIVE: Make advance arrangements with the carrier and, if using air freight or small parcel service, with the person who will pick up the dog.

SIX: On the day of shipment, be sure to arrive on time. This means about two hours before flight time for air freight and one hour before departure for dogs travelling with ticketed passengers. This lead time may be less at smaller airports, but you cannot be sure that your dog will make the flight if you arrive at the last minute.

Water, but do not feed your dog on flight day. Put a towel, blanket or paper in the crate for bedding. Immediately prior to tendering the kennel, check to be sure all the hardware is secure and the door is fastened.

You can declare a higher excess value on your dog above the standard (\$1,250 on excess baggage and a fixed rate per pound on air freight) by requesting and paying for it. You cannot collect more than you can prove the dog is worth. Commonly, what the dog is worth is either what you could have sold it for or what it would cost you to buy a comparable dog. Declaring a higher excess value on a dog does not ensure better treatment since ramp personnel who actually handle your dog are not aware of the coverage.

SEVEN: After you tender your dog, before you board the aircraft if you have not observed your dog's kennel out by the aircraft, ask the gate counter agent to call the ramp to see if they have your dog. It may help if you have some colored tape or other unusual marking on the kennel. (I have my Corgi's name, Angel, written on top of her kennel.) If shipping air freight, call the air freight office to verify the plane has left and the dog is on board after the scheduled time of departure. Then call the consignee with the airbill number. If you or your dog is transferring, repeat the procedure at every change.

AIRLINE TRANSPORTATION UPDATE (continued):

EIGHT: Be prompt in picking up your dog.

In general, you can expect an air freight dog to arrive in the cargo terminal 45 minutes to one hour after the plane arrives at the gate. At many stations, personnel say that their service is quicker if you are there when the plane lands. Excess baggage and small package service dogs are delivered to the odd baggage area after most of the passenger baggage has been brought in. If your dog does not appear, ask for it.

NINE: The interstate transportation of live animals is regulated by the United States Department of Agriculture., Animal Plant Health Inspection Service. Your dogs should be handled carefully, promptly and courteously. However, the Animal Welfare Act regulations do not cover minor delays and missed flights.

USDA, which operates with our tax dollars, is seriously underfunded. It restricts its investigations to serious infractions. If you have a legitimate complaint, you can report it to USDA, APHIS, listed in the Government section of your phone book or you can write to USDA, APHIS, Federal Building, Hyattsville, MD 20782.

TEN: Cost should be your last consideration when shipping your dog. It is better to ship on a nonstop flight regardless of cost. However, there may be a difference in air freight rates between carriers so it pays to check the freight rates if there are competing carriers on the route. If you are flying with two dogs round trip, the difference can be significant.

Air travel is safe for animals. If you use common sense and put your dog's needs before your own, your dog will have a better chance of having a smooth and pleasant trip.

We hope this information will help you. These are guidelines. For every situation there is an alternate way. Obviously, we do not recommend changing planes several times to avoid a certain carrier. If the only nonstop flight on the route you need to fly at a safe time is on United Airlines, then fly United. But if there is competition on that route, then pick the best carrier.

Probably the least knowledgeable people concerning aircraft environment, etc., are airline reservation agents, counter agents and flight attendants. Don't rely on them. You have your own information.

We cannot overstress the importance of using a proper crate and carefully selecting your flight. These two elements are within your control.

Good luck.

If you have problems or want to discuss this with me, you can reach me at (303) 841-6714. The best time to reach me is between 8-9 a.m. or 8-9 p.m. (Mountain time). If you leave a message on my answering machine, I will return your call collect. I cannot answer written correspondence.

COPYRIGHT 1989. No part of this article may be reproduced without the author's consent.

Published by the American Dog Owners Association, Inc., 1654 Columbia Turnpike, Castleton, NY 12033 and reprinted with the author's permission.

"Hewie"

Ch.. Cadance I Go Hugo of Cheers



CH. KEY POR'S BRITE BRIGADE x CH. TAURALAN THREE CHEERS

They say a picture is worth a thousand words. What can I say about the incredibly handsome Bullmastiff that you cannot already see? He has a perfect bite, he moves well, and he's definitely "Mr. Personality". **HEWIE** fits our standard to perfection. Look for **HEWIE** in the Specials ring this fall. Thanks to **HEWIE**'s breeders Mary Ann Grimes and Anne Wallick. Thanks also to respected judges Mrs. James Edward Clark, Mrs. Betty Moore, Mr. Samuel Pizzino, Mrs. Donna Buxton, and Mrs. Betty Linniger for recognizing our breed standard.

HEWIE WILL BE STANDING AT STUD TO BITCHES OF QUALITY.

Repeat breeding which produced the fine litter in which **HEWIE** was born expected this fall.

OWNER:

Jean Robinson

BREEDERS:

*Ann Wallick &
Mary Ann Grimes*

ALWAYS OWNER HANDLED

Cheers Bullmastiffs

RR6, Box 155, Frankfort, IN 46041
317-296-9360

CH. AAMDOT'S LITTLE CYRUS NOBLE



BMF-660

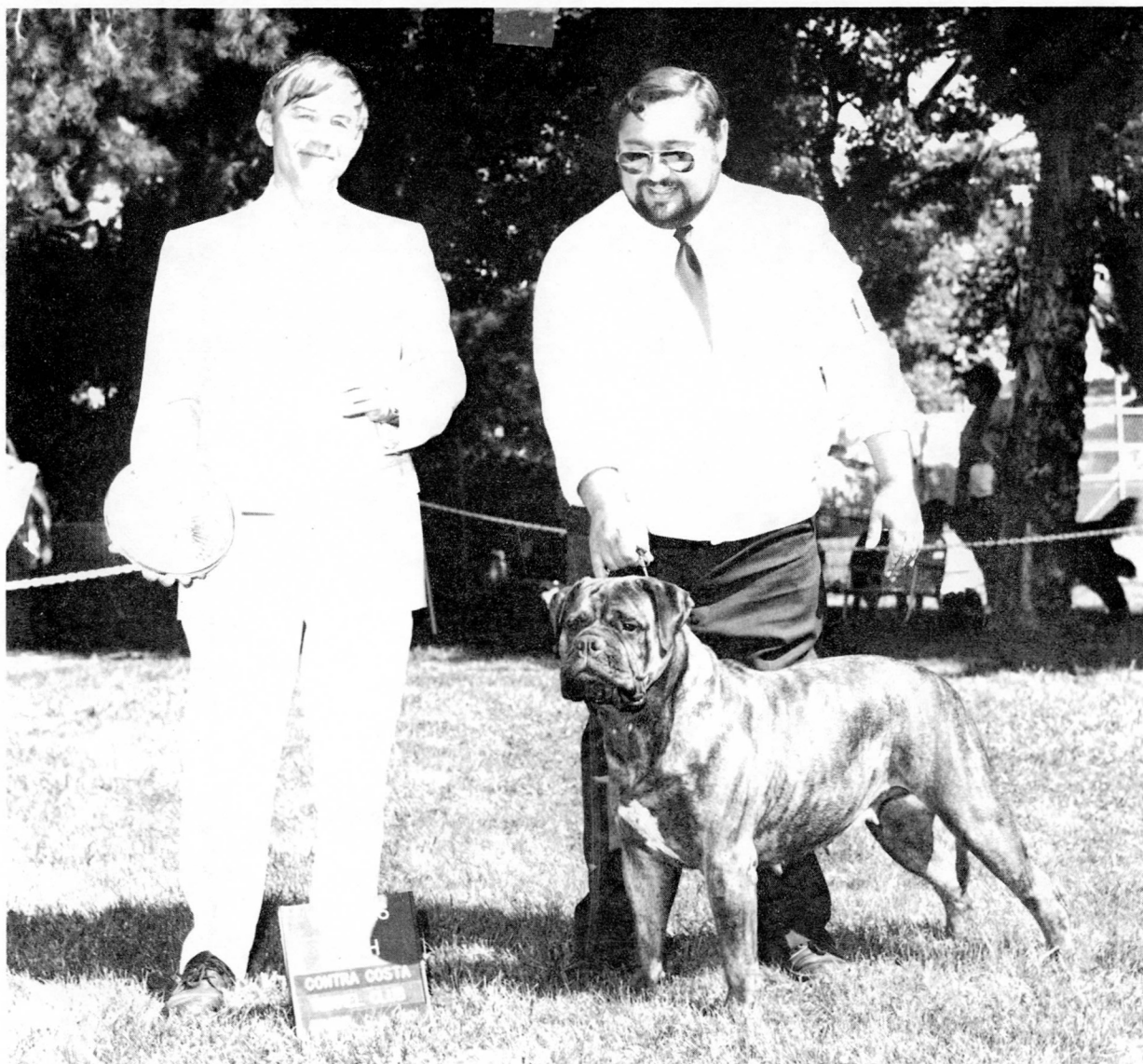
CYRUS CONGRATULATES ALL HIS KIDS ON ALL THEIR ACCOMPLISHMENTS, AND WISHES THEIR BREEDERS AND OWNERS THE BEST OF LUCK.

AT STUD TO APPROVED BITCHES

AAMODT'S BULLMASTIFFS

2405 Coffee Lane, Sebastopol, CA 95472
707-829-3258 and 707-823-2342

AAMODT'S LITTLE BUTTERCUP



CH. AAMODT'S LITTLE CYRUS NOBLE x CH. AAMODT'S LITTLE LADY ROYALLE

GYPSY is pictured here winning Winners Bitch at the A.B.A. Supported Entry at Contra Costa Kennel Club under judge Ken Buxton. We are planning an early Spring breeding to Multi Group winner **CH.TRI IVORY BACARDI**.

INQUIRIES WELCOME

AAMODT'S BULLMASTIFFS

2405 Coffee Lane, Sebastopol, CA 95472
707-829-3258 and 707-823-2342

CH. TRU GRIT'S CRYSTAL BALL



CRYSTAL recently took back to back Best of Breeds at Santa Clara Valley KC under Judge Dr. Quentin LaHam and Del Monte KC under Judge Judith Goodin. Both wins were over large, quality entries, including a group winning male and a Best in Show bitch.

CRYSTAL has an October litter due by **CH. TRI IVORY BACARDI**. We should get some typey pups with excellent movement and temperaments. **CRYSTAL** is co-owned by Al Batchelor of Tru Grit Bullmastiffs.

AAMODT'S BULLMASTIFFS

2405 Coffee Lane, Sebastopol, CA 95472
707-829-3258 and 707-823-2342

You Betcha!
Kind of Proud?

This PENNY Is Gonna Roll!



*Ch. Hy-Bull's Expensive Venture

MR. U'S MUSIC MAN x D'LITE'S BOLD AND BEAUTIFUL

PENNY finished her championship in Houston on August 10, 1990 by going WB, BW, and BOS for 4 points. **PENNY** is shown here accepting her win with good friend Michael Brantly. After a day's rest **PENNY** returned to the ring as a special to win BOS (Her sire "SATCHMO" took the breed that day). **PENNY** completed her championship at 12 1/2 months.

* Pending AKC confirmation

Lawrence D. Hyer

749 W. Oak Drive, Hurst, TX 76053
214-280-0615



CH DanJ'S A DEVIL IN HER EYE

'Angie"

BROOKHAVEN'S PICI, BMF-607 x
CJ. DJ'S MIGHT HAVE BEEN QUEEN



**BROOKHAVEN'S GOOD DAY
SUNSHINE**

@ 8 1/2 WEEKS

2 of **ANGIE's** offspring have been shown - Puppy Class only.

DanJ's ONE FOR THE ROAD (Sire - Ch. Brookhaven's Bruce of Rye, BMF-501)

Major pointed at 10 months

DanJ'S HUGGY BEATRIX OF LEGEND

(Sire - Ch. Brookhaven's Mean Mr. Mustard, BMF-498)

Major pointed at 8 months - Owned and handled by Lee Whittier

ANGIE will be bred one more time - to a third stud.

We believe a good bitch will contribute more to the future of her line bred
to several different dogs,

than if bred repeatedly to the same dog. In other words,

A BREEDING PROGRAM CANNOT GO FORWARD WHILE IT IS STANDING STILL.

ANGIE's granddaughter, "**SUNSHINE**", is owned and bred by P. Lipson
(Brookhaven Bullmastiffs). She is sired by **DanJ'S ONE FOR THE ROAD**
and is out of an inbred **MUSTARD** daughter.

D an J's
J. Duarte & D. L. Greenberg

P. O. Box 2638, No. Babylon, NY 11706
516-231-7748 or 516-231-0589

Bullmastiffs of Tailwynde, Reg.

Tailwynde's Lagnaippe



We expect puppies this Fall sired by **TAILWYNDE'S LAGNAIPPE** (Buckwheat) and his son **TAILWYNDE'S STICKSHAKER** (Sticker), both vibrant red brindles who are very typey, square dogs. They will be bred to red bitches of excellent type.

Tailwynde's Stickshaker



Dick and Adele Pfenninger

Penny Lane Farm
249 Hickory Corner Road, Milford NJ 08848
201-996-4769

Upper Crust's Mahogany Alan



CH. UPPER CRUST CHOCOLATE COWBOY x CH. UPPER CRUST'S CARTE BLANCHE

DIESEL is pictured here winning Best of Breed from the classes over a special at Bahia Sur KC. Later in the day he made the final cut of 6 dogs in the group. Thank you Dr. Maurice Waller.

His very next weekend out **DIESEL** took the breed again over several specials to win a 4 point major. Thank you Mr. Ralph Morrison! His most recent win was a 2 point BOS to Mom's BOB at Mt. Palomar KC.

DIESEL has a total of 11 points entirely owner handled. Like his littermates, **DIESEL** is brilliant red, solid as a rock, has perfect dentition, dark eyes, and is stable and outgoing.

DIESEL is owned and much loved by:

*Lance and Bonnie Maguire
Travis and Sable Maguire*

131 Tierra Blanca, Oceanside, CA 92054
619-430-2857

THIS IS THE BEGINNING

June 30, 1990

KEEPER'S MISTRES PAPER DOLLS



CH. BLACKSLATE'S BOSTON BLACKIE x NUTIKET FILET MIGNON

WE ARE PROUD

IN VERY LIMITED SHOWING, 3 BEST OF BREED WINS OVER SPECIALS

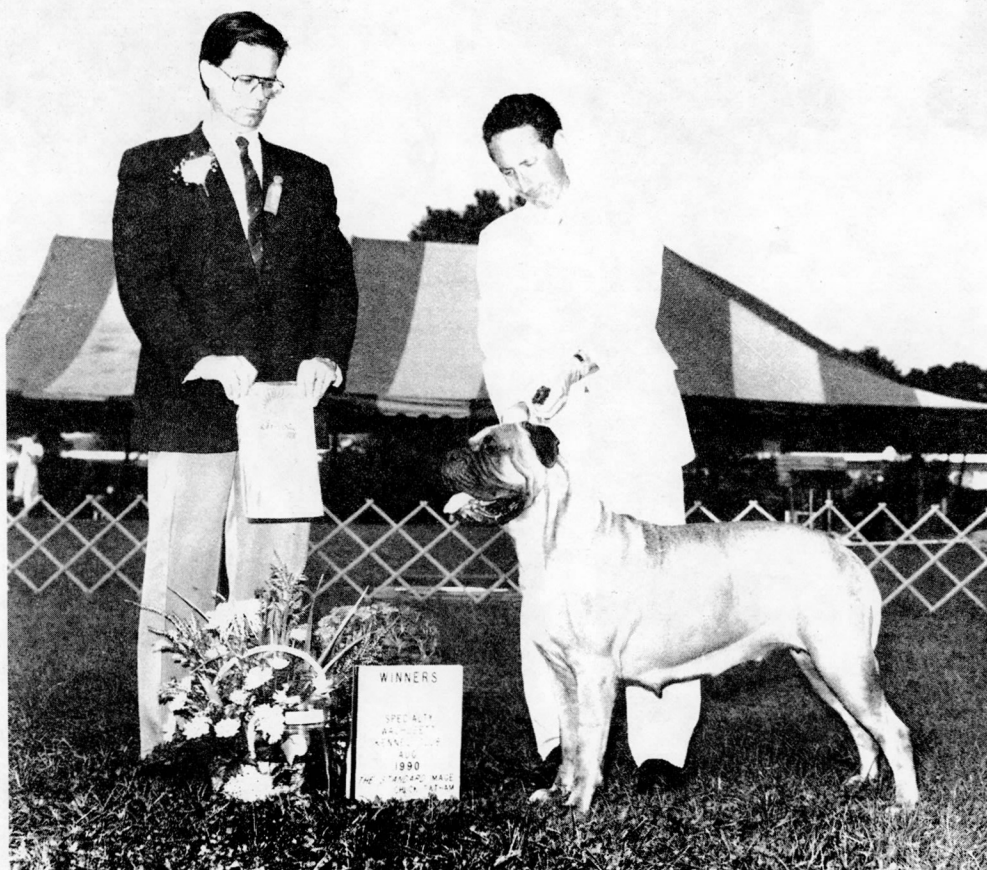
David Campbell & Patricia Ridgard

1599 No. Brookfield Road, Oakham, MA 01068
508-882-5518

THIS IS THE FINISH

August 18, 1990

**CH. KEEPER'S MISTRES PAPER DOLLS*



4 MAJORS WITH A SPECIALTY WIN FINISH

Thank you Linda and Eliot More (handlers), Anne Lewis (breeder), Virginia Rowland, and all the judges who saw quality and sound movement.

* Pending AKC confirmation

David Campbell & Patricia Ridgard

1599 No. Brookfield Road, Oakham, MA 01068
508-882-5518

Seastar Proudly Presents

Sire: CH. BLACKSLATE'S BOSTON BRAHMIN



First Bullmastiff Bitch To

Breeder
Geraldine Roach

Owner
Stan & G

Ch. Ladybug Seastar's Gem

Dam: CH. LADYBUG IM CHLOE, CD

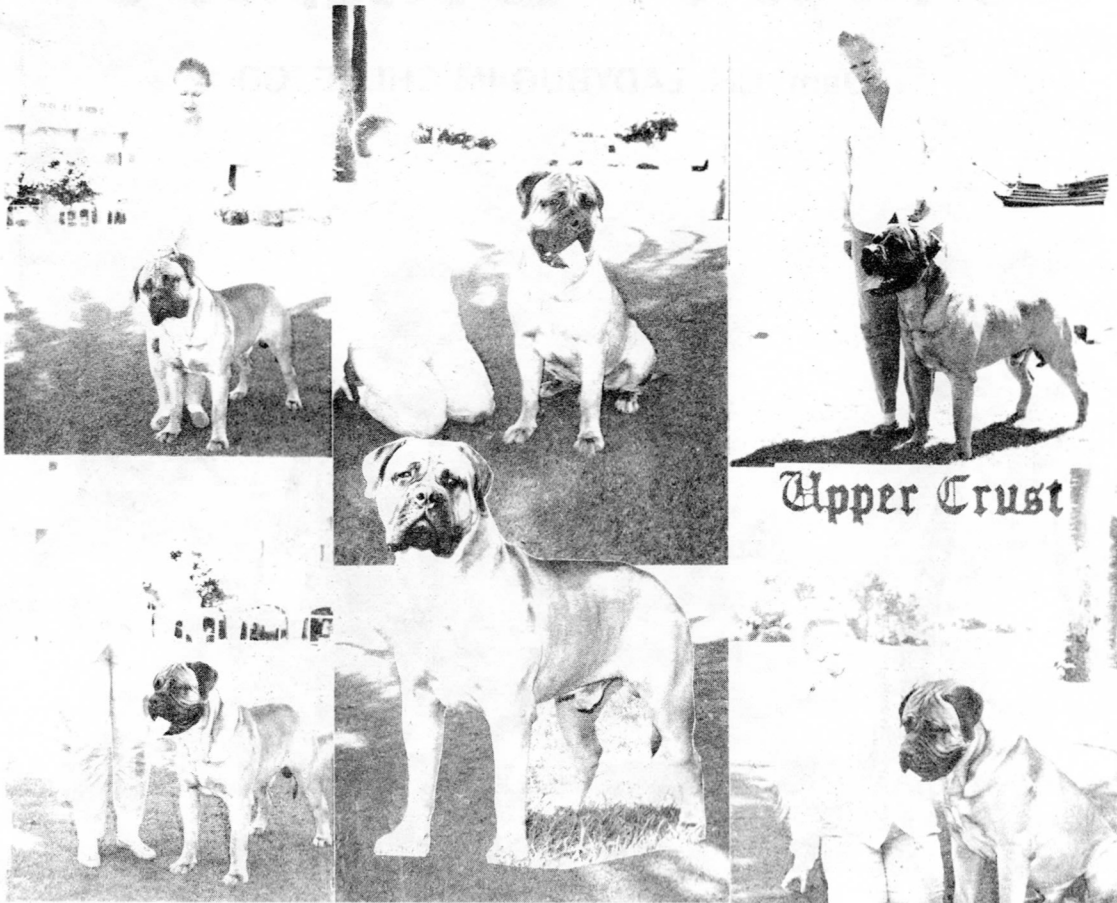


Ever Win Best In Show

Owners
Bill Cohen

Handlers
Edward & Lesley Boyes

Upper Crust's Weekend Warrior



CH. AAMODT'S LITTLE CYRUS NOBLE x CH. UPPER CRUST'S CARTE BLANCHE

This handsome young man just turned one year old. He has a very promising future. He is third generation Upper Crust. It makes one very proud to have bred such a special dog!! Home to stay, and grow up, mature, and get ready for what the future hold for him....

Terry and her very special boy are having a wonderful happy time together. This impressive Bullmastiff has earned to date 9 points and two majors toward his championship title!!

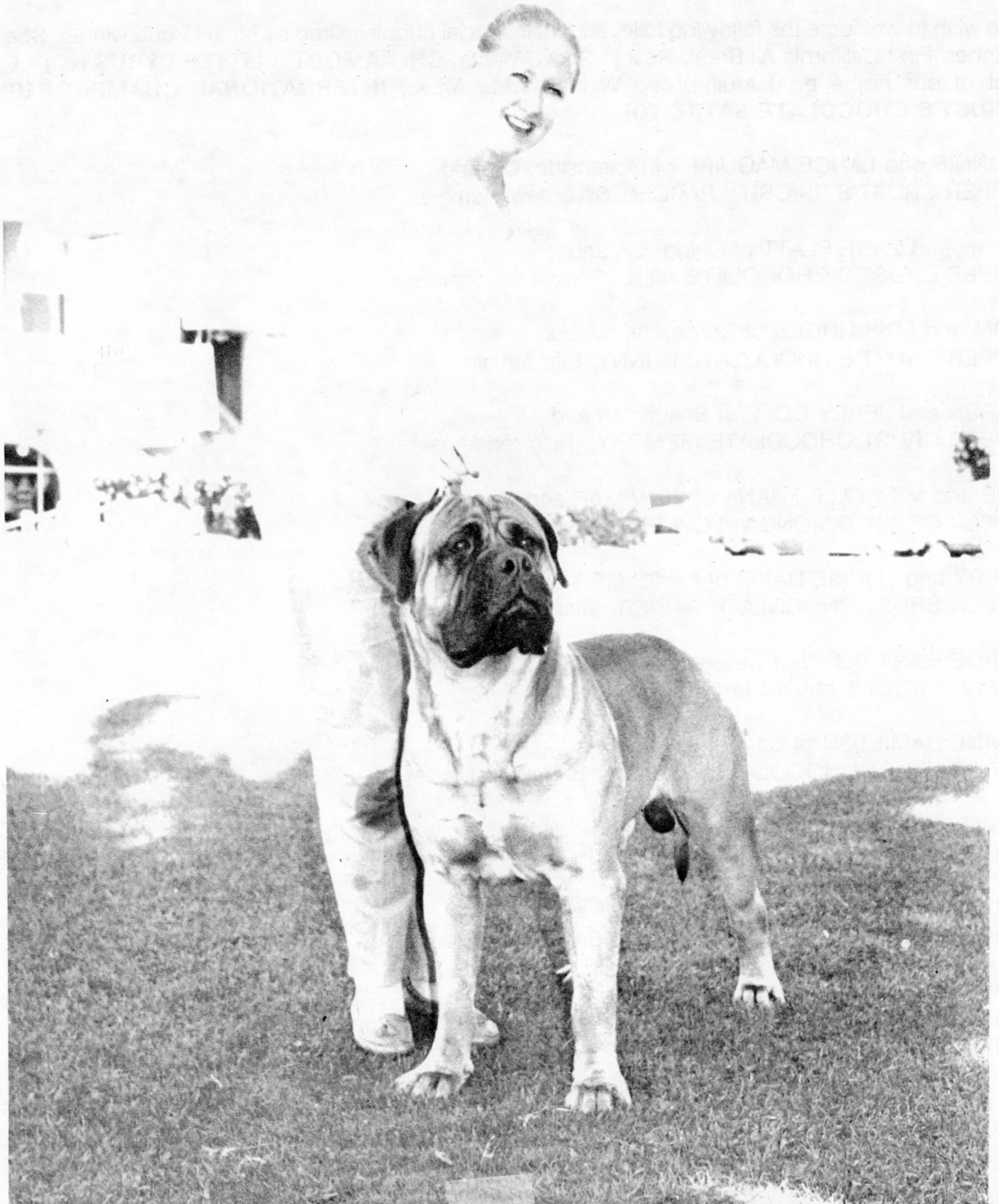
Upper Crust

"Home of Champions"
Top Producers and Specialty Winners

Ranette & Terry Gaskins

4635 Normandie Place, La Mesa, CA 92041
619-697-7075

Upper Crust's Weekend Warrior



Welcome, Welcome, Welcome, Welcome In The Upper Crust Tradition

We wish to welcome the following folks and their special puppies sired by Multi-Group winner, Specialty Winner, First California All Breed Best In Show Winner, **CH. AAMODT'S LITTLE CYRUS NOBLE**, and out of our home bred Multi-Breed Winner, **AM., MEX., INTERNATIONAL CHAMPION UPPER CRUST'S CHOCOLATE SATIN, TDI.**

BONNIE and LANCE MAGUIRE of Oceanside, CA and
UPPER CRUST'S PRIORITY PARCEL. Silver fawn female.

JOHN and ZANE PLATT of Chino, CA and
UPPER CRUST'S CHOCOLATE SILK. Brilliant red female.

TOM and LOIS HUGES of Coronado, CA and
UPPER CRUST'S CHOCOLATE BUNNY. Red female.

KAREN and JERRY COLE of Bristol, VA and
UPPER CRUST CHOCOLATE MEMORY. Rich red female.

JOE and MICHELLE FRANK of KENAI, AK and
UPPER CRUST DIMOND WILOW IRIS. Silver fawn female.

LARRY and LOUISE DAVIS of Fairfield, CA and
UPPER CRUST CHOCOLATE RAIDER. Rich red male.

JORGE HANK ROHN of Caliente, Baja Ca. MEX., and
UPPER CRUST'S MAGIC MAKER. Red fawn male.

SHANE HAMILTON of Carrett, KY and
UPPER CRUST CHOCOLAT GAMBLER. Brilliant red male

MIGUEL KOENIG of Acapulco, MEX. and
UPPER CRUST CHOCOLATE GIGOLO. Rich brilliant red male

MICHAEL SEDGWICK of Chula Vista, CA and
UPPER CRUST CHOCOLAT TRIBUTE. Brilliant red male.

Staying at Upper Crust:

UPPER CRUST'S FAN TABULOUS. A handsome silver fawn male, "TARZAN"
UPPER CRUST'S GORBACHOCOLATE. A great brilliant red male "GORBI"

We will be co-owning with Bonnie and LANCE MAGUIRE the beautiful silver fawn female, UPPER CRUST'S PRIORITY PARCEL, "PEBBLES". We are also proud to co-own with Zane and John Platt a gorgeous devilish red, her mother's twin, UPPER CRUST'S CHOCOLATE SILK.

WE THANK YOU ONE AND ALL FOR CHOOSING ONE OF OUR LOVELY PUPPIES!

Ch. Upper Crust's Carte Blanche



HOME TOWN GIRL MAKES GOOD!!!

BLANCH recently won Best of Breed both days of our local two day circuit. Thank you to judges Richard Fetzer and La Verne Walker.

BLANCH's "kids" also did well: On Saturday **UPPER CRUST'S MAHOGANY MAN** (Diesel) was BW and BOS for 2 points. He now has 11 points, 1 major, and **UPPER CRUST'S GIRL MOST LIKELY** (Gilda) was WB for 1 point. On Sunday **UPPER CRUST'S WEEKEND WARRIOR** (Genghis) was WD and BOS for his 2nd major, he was 11 months and 2 weeks old. We have repeated the breeding that produced **DIESEL** and his littermates **UPPER CRUST'S COWBOY AT HEART** (14 points, both majors) and **CH. UPPER CRUST'S RADIANT REDHEAD**. The pups are due the first week in November, sired by our own **CH. UPPER CRUST'S CHOCOLATE COWBOY**.

BLANCH has been specialed only 6 times this year winning 4 BOBs and a Group 3! She was also BOS once to her son **GENGHIS**, who won Best of Breed from the classes over 4 specials!

Upper Crust

"Home of Champions"

Top Producers and Specialty Winners

Nanette & Terry Gaskins

4635 Normandie Place, La Mesa, CA 92041

619-697-7075

CH. ALLSTAR'S MARTIN RIGGS



MARTIN continues with multiple breed wins and consecutive group placements. For the next several months he will be headquartered with his handler, Al Miniero, in South Carolina and will be shown extensively.

ALLSTAR

Mimi M. Einstein

Mt. Holly Road, Katonah, NY 10537
914-232-9166

CH. ALLSTAR'S BUCKUS

(a. k. a. Mel Gibson)



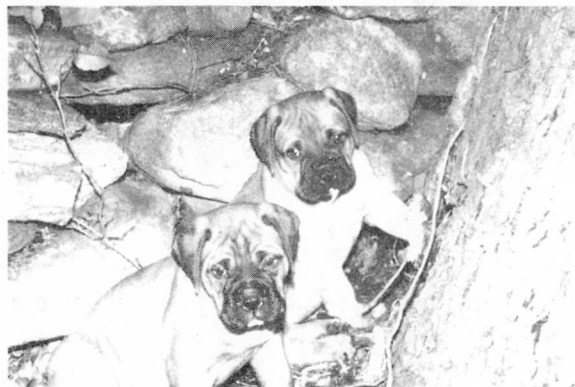
Allstar is very proud of **MARTIN's** brother **MEL**, who has jumped off the couch and into the ring. In three consecutive shows he amassed three Best of Breed wins, two majors, and has 10 points. He is a lovely, large, red dog who exemplifies correct breed type, temperament, and soundness. **MEL** is owned and loved by Bill and Diane Sager of Buffalo, NY.

ALLSTAR

Mimi M. Einstein

Mt. Holly Road, Katonah, NY 10536
914-232-9166

ALLSTAR PUPPIES



These future stars are by **CH. ALLSTAR'S TERRY THOMAS** out of **CH. ALLSTAR'S MAE WEST**.

TERRY, who just turned two, is on his way to proving himself a very important stud dog. Puppies from his first three litters reside on the east coast and west coast and in the midwest, Bermuda, Alaska, and Canada. They will be seen in the show ring when they are mature. His fourth litter is due in early October.

If you are looking for truly outstanding style and substance in a brindle dog, **TERRY** stands at stud at Allstar.

ALLSTAR
Mimi M. Einstein

Mt. Holly Road, Katonah, NY 10536
914-232-9166

PRAETORIAN BULLMASTIFFS



Ch. Irongate's Ann of Praetorian

BMF-737, BMF-EL1

CH. MILESTONE'S HANNIBAL x CH. DANRHONGLYN'S CINDERELLA

We have recently bred our pretty **ANN** and expect an early October litter. **ANN** has been bred to the handsome ebony brindle, **SANDCASTLE BUBBA O MIDLMARCH**. **BUBBA** is a double grandson of **AM, INT'L SPANISH, BUNDESSEIGER CH. BLACKSLATE'S BOSTON BLACKIE, ROM**. He has a wonderful temperament, beautiful head, perfect bite and nice size.

This litter is line bred and should produce some very nice, typey brindles, reds, and fawns.

INQUIRIES INVITED

Sandy and Clark Frontin, Jr.

P O Box 876, Monte Rio, CA 95462
707-865-2995

Cadance Tauralan Take A Bow



CH. KEY POR'S BRITE BRIGADE x CH. TAURALAN THREE CHEERS

DIVA is pictured at 17 1/2 months at Silver Bay KC, San Diego, CA with handler Sylvia Rodwell after taking Best of Winners for a 3 point major (2 points in bitches). **DIVA** now has 9 points. She will be shown to complete her championship, speialed occasionally, and in the Spring bred to our CH. TAURALAN THOMAS MAGNUM, her cousin.

We sadly announce the sudden death of our much loved and very young stud dog, TAURALAN TRIUMPHANT (HONDO), on July 12th. He has sired 4 litters, the latest born just 13 days before his death. From that we have kept an exceptionally pretty brindle bitch TAURALAN LOVE TRIUMPHS. She joins her half brother and sister here at TAURALAN who were also sired by HONDO, CH. TAURALAN THOMAS MAGNUM and CH. TAURALAN MUSIC OF THE NIGHT.

Carol H. Beans

12131 Arroyo Avenue, Santa Ana, CA 92705
714-544-1824 or 714-730-9106

Ch. Tauralan Thomas Magnum



TAURALAN TRIUMPHANT x CH. WILD HEARTS TUMBLEWEED TESS

MAGNUM is a massive fawn with an exceptional head. We believe he has a great deal to offer the breed as a stud dog. He has been bred to our **CH. TAURALAN VELVET TOUCH** (Ch. Wild Hearts Samson x Blackslate Tauralan Tobit).

We are very pleased to announce that **CH. TAURALAN TEE SOO** is in whelp to **CH. WILD HEARTS IRON EAGLE** (Ch. Wild Hearts Samson x Ch. Niteslate Tauralan Hot Toddy). Puppies are due the 3rd week of October.

Carol H. Beans

12131 Arroyo Avenue, Santa Ana, CA 92705
714-544-1824 or 714-730-9106

PROTECTING YOUR KENNEL NAME

By JANET MORRIS

We all value our names. Most dog breeders have adopted names for their kennel which they affix as a prefix or suffix to the names of the dogs they register with the American Kennel Club. Those of us who have spent time and energy to establish our breeding program have an investment in them. Indeed, because of the particularized breeding program of some breeders, members of the fancy often describe a certain look or type of Bullmastiff by their kennel name. The question is, after having set our stamp, how do we prevent others from using and capitalizing on our work through use of our name?

A word or design can be a mark which is the designation of the source of the article with which it is associated. It becomes the proprietary right of its owner and can have distinct market value. There are probably four ways to protect your property right: (1) Common law rights under the law of trademarks, (2) establishing a system to "reserve" a kennel name, as suggested in the defeated proposal of the American Bullmastiff Association, (3) registering your kennel name with the American Kennel Club; and (4) obtaining a trademark or service mark registration through the United States Patent and Trademark Office.

The Common Law (that generally recognized body of law adopted from England) can provide some protection. You must establish your specific priorities -- prior use and geographical extent of use. As "the first user" in a specific area, you have the right to legal action against a subsequent user. If someone were to utilize your name for the particular breed for which you could establish sales in a particular geographical area of the country, you could establish your preexisting usage and prior rights.

The now-defeated proposal of the ABA suggested that for a fee of \$50.00 it would reserve a kennel name for you. It was and remains unclear whether that "reservation" was for bullmastiffs in particular, or dogs, in general. It also was unclear as to what would happen to those individuals who had used kennel names for years who chose not to reserve their names. Would someone new to the breed be able to register names like "Bullmast," "Shastid," "Jubilee," "Tailwynde"? Furthermore, the ABA system did not describe any enforcement proceedings to protect a "registered" name. In short, a nice money-making project, but not completely thought out.

A third method is offered by the American Kennel Club, which provides a registration to individuals who are "serious" breeders for 5-10 years. When questioned about the "5-10 years", the representative to whom I spoke could not be more specific, but stated that the applicant should be a breeder who had registered, on average, at least one litter a year for the past five years and had exhibited in confirmation for the past two years. That may not be as specific as one would wish, but it is the best information I could get. In addition, the AKC requires that the name be "unique," which is a standard it applies in its own discretion.

A name which is or could possibly be construed as a given name, a family name or a geographical reference will not be accepted. That means that names like "Stonehenge," "Moorland," "Shastid," and "Bluegrass" probably would not be acceptable to the AKC.

The name must be used only as a prefix to the dog's name. You are required to submit two names to the AKC and, if accepted the name will be reserved for you for five years at a cost of \$100.00. The registration is renewable for periods of five years at a cost of \$75.00 for each renewal.

PROTECTING YOUR KENNEL NAME (continued):

When asked how the AKC would police the use of the name, the representative stated that computer research is conducted as well as other research which was not specifically identified. This probably means that the AKC will search its own computer banks for the same and, it is hoped, similar names or spellings, and it will search some dog records and advertisements and probably the Trademark Gazette of the U.S. Patent and Trademark Office (a government publication) for other names. If it finds the same or a similar name, it will not register another. That does not mean someone else cannot use your name, only that it may not be registered with the AKC. In addition, the AKC registration gives you no right to actions through AKC procedures against a possible infringer. The AKC will do nothing except possibly deny registration of the infringing name.

The fourth method, although by far the most expensive, offers the most protection. It requires that you submit your trademark or service mark to the United States Patent and Trademarks Office for registration. Once registered, the entire United States is on notice of your mark for your goods or services, and should anyone infringe that mark, you have a right to seek redress, including the right of suing the infringer to prevent further use of your name and for damages that the infringer may have caused during the period of infringement.

A trademark or service mark identifies and distinguishes your product or service from others, serves as an assurance of consistency of quality, and assists in advertising and promoting the product and service. (A trademark identifies goods, such as a dog or a kennel; a service mark identifies a service such as a stud service or a pedigree service.) In the United States, trademark and service marks are created and acquired by adoption and use. Once adopted, a mark should be used continuously in order to maintain rights in it. Trademarks and service marks can last forever, so long as the mark is in use. To register with the United States Patent and Trademark Office, the mark must be used in interstate commerce. That means the service or product must be provided or sold in a state other than that in which it originated. Selling puppies to individuals in other states or providing stud service to members across the country qualifies as interstate commerce.

Further, a trademark or a service mark is an adjective and should be used only as an adjective. Therefore if not used as a prefix, i.e., MOORLAND Best of Times, it should be used as an adjectival phrase, Best of Times, a bullmastiff from MOORLAND Kennels. To emphasize or distinguish the trademark or service mark, it can be presented in print in all capital letters. It should not be changed or modified; e.g., Moorland's, in the possessive, is an improper use of the trademark Moorland. It should not be used as a verb and should never be used as a noun.

Should you decide to register your trademark or service mark, you should first conduct a search. This will determine whether your mark is available for use, or whether someone else has already adopted the same or similar mark for similar goods or services. If the search reveals the same mark but the goods or services are substantially different, you will not necessarily be precluded from using the mark. For example, Tiffany, for jewelry, is a well-known trademark of Tiffany & Co.; however, it is not a trademark for dogs. The two marks probably could co-exist.

It is best to find a qualified trademark or intellectual property lawyer to conduct the search through established sources and to analyze the search to give you an opinion on the availability of the mark. The cost of such a search and opinion will be about \$500.00. However, the cost is well worth it in terms of protecting your time, energy and investment in establishing your mark.

PROTECTING YOUR KENNEL NAME (continued):

If the mark is available, you then can proceed with the registration by asking your lawyer to complete the registration forms, having established that the goods or services have been distributed in interstate commerce. After the application for registration has been filed, and if the U.S. Patent and Trademark Office raises no objections, the mark will be published in a periodical published by the Patent and Trademark Office notifying the entire United States that you are seeking to hold that mark for your own personal use. That places anyone who wishes to object to your usage on notice and gives a limited time for that person to object to your adoption of the mark.

If no objection is received, you will receive notice that your mark is registered with the U.S. Patent and Trademark Office and you can insert an "R" in a circle, or the term "Reg. TM" after your mark. The charges for legal services for filing for registration will be approximately \$500.00, which is in addition to the search cost.

You are not required to continuously search every possible source for possible infringers, but once you are aware that infringement has occurred, you should take action to protect your rights. Thus, you must be constantly vigilant and diligent to protect your valuable name. Should someone infringe your mark, you will have to initiate your own action to prevent such infringement. Usually that starts with a polite, but firm, letter to the infringer setting forth your rights to the exclusive use of that name for that line of trade or commerce. In most cases, that alone will be sufficient to cause the infringer to cease using the name since no one really wants to be involved in a law suit. If that is not the case, you will have to institute legal action to protect your mark or you may risk losing your exclusive right to the mark. Unfortunately, the patent and trademark laws provide for recovery of attorney fees only in exceptional cases.

In sum, it can cost time and money to protect your property rights. In this era of litigiousness, one cannot simply rely upon the "honor" of those in the fancy. We spend large sums of money on stud fees, whelping our dogs, keeping them in good health, exhibiting them to obtain championship certificates, advertising the product of our work. This is just one additional expense to protect that which we have worked so hard to produce.

THE 1990 AMERICAN BULLMASTIFF ASSOCIATION NATIONAL SPECIALTY

By CAROL BEANS

This year's Specialty was held in Placentia, California at Kraemer Park. The listed entries were 138 Bullmastiffs with 209 entries. The actual dogs showing after absentees were counted were 117.

The scheduled events started Friday morning, September 21st, with the Obedience judging. Linda Watson judged six Bullmastiffs divided into Novice A, Novice B, and Open B classes. Two dogs attained qualifying scores. Both were in Novice B. Am., Mex., Int'l Ch. Upper Crust's Chocolate Satin, TDI gained her CD in this trial by earning a score of 191 1/2 for her third leg toward her title. This gave her the High Scoring Bitch trophy and High Scoring in Trial. High Scoring Dog in Trial went to Uncle Guido of Brittany Beau with a score of 171 1/2. Free coffee and doughnuts were provided to all attending the Trial.

At one o'clock Friday a seminar was held at the show's headquarters hotel, Griswold's Hotel in Fullerton. Speakers were Dr. Barbara Reichel of International Canine Genetics and Dr. Daniel Lavach, a veterinary ophthalmologist practicing in Orange County, CA. About thirty people attended the seminar which consisted of lectures with slide presentations and extensive question and answer sessions on each subject.

Friday evening the ABA held it's annual General Meeting and election of officers.

Saturday morning the focus was back on Kraemer Park for the Sweepstakes and Specialty classes. Both Friday and Saturday saw very good weather for showing. The Sweepstakes ring had plenty of shade in the morning and the Specialty ring had a 15 x 30 foot canopy. A 10 by 20 foot canopy was provided near the rings for those who did not bring shade equipment for their dogs. Boutique items were on sale most of the day. Coffee and sweet rolls were provided free of charge to all attending. Lunch was catered at noon with a lovely selection of salads and croissant sandwiches. A raffle was held during the lunch hour.

At 7:30 pm there was a cocktail hour at Griswold's following by a barbeque buffet awards banquet. An art auction was held directly after dinner and before the presentation of awards.

Sunday morning the action moved to Cypress College for the Santa Ana Ana Valley KC show and ABA's Supported Entry of 83. This was followed by an Open House Brunch Buffet hosted by Tom and Patricia O'Brien, who graciously invited all who participated in the Specialty to attend.

As show chairman, I can attest to the fact it was a busy three days. As hectic as the schedule was, there was a pleasantly casual and comfortable atmosphere at all the events, which is what was both planned and hoped for. The show committee did a great job and I appreciate their hard work. When events run smoothly it's always because people worked together and did their jobs responsibly. Thanks have to go to Obedience chairman, Mona Lindau-Webb, Grounds chairman, Scott Peterson, Sales chairman, Denyse Raskin, Candid Photographer, Clint Carlisle, Raffle chairman, Tracy Ferrick, Catalog Advertising chairman, Nanette Gaskins, Art Auction chairman, Virginia Rowland, Bill and Pat Hudson, Jim Beans, Carolyn Seitz and all the stewards, announcer, and staff from Newport Dog Shows.

Next year the National moves to Texas, where I'm sure there are plenty of exciting activities planned.

 1990 A.B.A. NATIONAL SPECIALTY (continued):

The following are the results of the Sweepstakes and Specialty judging.

SWEEPSTAKES**Judge: Tom LaPaglia****6 - 9 Month Puppy Dogs**

1. AAMODT'S HERE TO TAKE IT ALL - Anderson & Cresci
2. ON-IT'S MOODY LITTLE BRAT - Miracle & Swain
3. PRAETORIAN FAIR GO SHERE KHAN - Godfrey
4. PRAETORIAN'S SHADOWBEAR - Frontin

12 - 15 Month Dogs

1. UPPER CRUST'S WEEKEND WARRIOR - Gaskins
2. UPPER CRUST'S THIEF OF HEARTS - Gaskins
3. DJ'S BULL DURum - Crafton
4. SOUND OFF'S DESPERADO - Molik

6 - 9 Month Bitches

1. AAMODT'S SPIRIT OF TRU GRIT - Batchelor & Aamodt
2. FLATIRON MR U'S HELLO DOLLY - Underwood
3. BARB'ERIC'S FLASH DANCER - Long & Moffatt
4. SANDCASTLE'S SCHEHEREZADE - Cressall

12 - 15 Month Bitches

1. BRODMERE'S WILLOWOOD OUIJA - Doll & Gann
2. DJ'S UPPER CRUST SWEET DREAMS - Crafton
3. UPPER CRUST'S GIRL MOST LIKELY - Gaskins

Best in Sweepstakes - TRI-IVORY IRISH CREAM**Best of Opposite Sex - TRI-IVORY RUSSIAN ROULETTE****9 - 12 Month Dogs**

1. TAURALAN WILD HEART TALISMAN - Charlton
2. J-MAR'S RAZZ MA TAZZ - Tackett

15 - 18 Month Dogs

1. TRI-IVORY IRISH CREAM - Polk
2. OAKEN'S ARGUS AT INXS - Bodnaruk
3. STONEPOST KINGSLYNNE TUCKER - Campbell
4. TRI-IVORY ARAMIS - Villavicencio

9 - 12 Month Bitches

1. MAGNUM'S LUSCIOUS LIL - Jackson
2. IRONGATE'S ASIAN SUGAR - Potter
3. DOX RUBY MY DEAR BLACKSLATE - Crawford
4. IRONGATE'S CALIFORNIA RAISIN - Kapple

15 - 18 Month Bitches

1. TRI-IVORY RUSSIAN ROULETTE - Polk
2. TRI-IVORY BOUCHERON - Polk
3. SEDENTARY'S ONE BRICK SHORT - McAlister

SPECIALTY**Judge: Donald Booxbaum****6 - 9 Month Dogs**

1. AAMODT'S HERE TO TAKE IT ALL - Anderson & Shea
2. ON-IT'S MOODY LITTLE BRAT - Miracle & Swain
3. BELLES BOSWORTH OF BULLMAST - O'Brien
4. BISHOP BEAUREGARD O BULLMAST - Edholm & White

Junior Dogs (12 - 18 Months)

1. STONEPOST KINGSLYNNE TUCKER - Campbell
2. SOUND OFF'S DESPERADO - Molik
3. OAKEN'S ARGUS AT INXS - Bodnaruk
4. DJ'S UPPER CRUST BOLD AS BRASS - Watts

American Bred Dogs

1. BARON BEAUJOLAIS OF BULLMAST - Hill
2. ZEUS STRONGMAN HERCULES - Jones
3. DJ'S BARTHOLOMEW OF WALKING BEAR - McDonnell

Winners Dog - AAMODT'S TROOPER O PRAETORIAN**Reserve Winners Dog - TRI-IVORY IRISH CREAM****9 - 12 Month Dogs**

1. TAURALAN WILD HEART TALISMAN - Charlton
2. IRONGATE'S EBONY BARON - Kapple
3. J-MAR'S RAZZ MA TAZZ - Tackett

Bred By Exhibitor Dogs

1. TRI-IVORY IRISH CREAM - Polk
2. PRAETORIAN CAPTAIN CAVALRY - Frontin
3. UPPER CRUST'S WEEKEND WARRIOR - Gaskins
4. SHAYLA'S KHARLEIGH ALARGH DDU - Walkey

Open Dogs

1. AAMODT'S TROOPER O PRAETORIAN - Moyer
2. SHAYLA'S KEEPER ALARGH DDU - Walkey & Scholl
3. BANSTOCK'S PRINCE ALBERT - Leary
4. BARB'ERIC'S WALL ST TYCOON - Long & Moffatt

.....

1990 A.B.A. NATIONAL SPECIALTY (continued):

6 - 9 Month Bitches

1. BONNIE BLUEBELL OF BULLMAST - Blair
2. FLATIRON MR U'S HELLO DOLLY - Underwood
3. BARB'ERIC'S FLASH DANCER - Long & Moffatt
4. AAMODT'S SPIRIT OF TRU GRIT - Batchelor & Aamodt

12 - 18 Month Bitches

1. TRI-IVORY BOUCHERON - Polk
2. BRODMERE'S WILLOWOOD OUIJA - Doll & Gann
3. BEAUTY'S BLESSING OF BULLMAST - O'Brien

Bred By Exhibitor Bitches

1. TRI-IVORY RUSSIAN ROULETTE - Polk
2. SEDENTARY'S ONE BRICK SHORT - McAlister
3. UPPER CRUST'S GIRL MOST LIKELY - Gaskins

Open Bitches

1. DANCER'S MS MAJOR MOTION - Chen & Polk
2. IRONGATE'S CHANTILLY LACE - Urbanski & Borg
3. BRUIN'S SCARLET O'BEARA - Johnson
4. BANDOGE ACADIEN SAUVAGE ROUGE - Bachrach & Page

Winners Bitch - DANCER'S MS MAJOR MOTION**Reserve Winners Bitch - IRONGATE'S ASIAN SUGAR****6 - 8 Year Veteran Dogs**

1. CH. TUNDRA'S PINWOOD BARON - Kochuba

6 - 8 Year Veteran Bitches

1. CH. TAURALAN TRIGA DE AZTECA - Gaskins
2. CH. LADYBUG IM CHLOE, CD - Roach
3. CH. TAURALAN TESORO DE AZTECA - Aamodt

Best of Breed - CH. TUNDRA'S PINWOOD BARON - Kochuba**Best of Opposite Sex - CH. LADYBUG IM ANGELICA ROSE - Roach****Stud Dogs**

1. CH. AAMODT'S LITTLE CYRUS NOBLE - Aamodt
2. CH. SUGAREE ROSCOE T - Cochran

Brace

1. CH. LADYBUG'S IM CHLOE, CD - Roach
- CH. LADYBUG CHARLOTTE WYN - Roach

9 - 12 Month Bitches

1. IRONGATE'S ASIAN SUGAR - Potter
2. DOX RUBY MY DEAR BLACKSLATE-Crawford
3. MAGNUM'S LUSCIOUS LIL - Jackson
4. IRONGATE'S CALIFORNIA RAISIN - Kapple

Novice Bitches

1. BONINGALE OF BULLMAST - Cervantes

American Bred Bitches

1. MYDOGGE IT'S A TIGGER - Gingrich
2. NEMESIS PEG OF MAGNUM - Blalock

8 & Over Veteran Dogs

1. CH. RUFUS JAKEUP SON OF BEAR - Crafton

Brood Bitches

1. CH. LADYBUG IM CHLOE, CD - Roach
2. CH. TRI-IVORY TUACA - Polk
3. CH. UPPER CRUST'S CARTE BLANCHE - Gaskins
4. CH. TAURALAN TEE SOO - Beans

**AMERICAN BULLMASTIFF ASSOCIATION SUPPORTED ENTRY
SANTA ANA VALLEY KENNEL CLUB**

Sunday September 23, 1990

Judge: MR. HOWARD FRAILEY

This show was held at Cypress College, Cypress, CA. Sixty nine Bullmastiffs were actually present; 26 dogs, 18 bitches, 2 veterans, 23 champions. The ring was large and level with a good sized shade canopy, so although the weather was sunny, there was ample shade for the dogs waiting to compete in large classes. The following is a list of the placements:

6 - 9 Month Dogs

1. AAMODT'S HERE TO TAKE IT ALL - Anderson & Cresci
2. ON-IT'S MOODY LITTLE BRAT - Miracle & Swain
3. BELLES BOSWORTH OF BULLMAST - O'Brien
4. PRAETORIAN BRUNO(MIDDLEMARCH - Marinaro

Bred by Exhibitor Dogs

1. UPPER CRUST'S WEEKEND WARRIOR - Gaskins
2. DJ'S BULL DURUM - Crafton

Open Dogs

1. BARB'ERIC'S WALL ST TYCOON - Long & Moffatt
2. STONEPOST KINGSLYNNE TUCKER - Campbell
3. UPPER CRUST'S MAHOGANY MAN - Maguire
4. TAURALAN TOMMY TRADDLES - Foster

Winners Dog - TAURALAN WILD HEART TALISMAN

Reserve Winner Dog - AAMODT'S HERE TO TAKE IT ALL

6 - 9 Month Bitches

1. FLATIRON MR U'S HELLO DOLLY - Underwood
2. IRONGATE'S NAUGHTY NELLA - Urbanski & Borg
3. SANDCASTLE'S SCHERHERAZADE - Cressall

Bred by Exhibitor Bitches

1. SEDENTARY'S ONE BRICK SHORT - McAlister
2. BEAUTY'S BLESSING OF BULLMAST - O'Brien
3. DJ'S UPPER CRUST SWEET DREAMS - Crafton

Open Bitches

1. IRONGATE'S CHANTILLY LACE - Urbanski & Borg
2. BANDOG ACADIEN SAUVAGE ROUGE - Bachrach & Page
3. TAURALAN CADANCE TAKE A BOW - Beans
4. BRODMERE'S WILLOWOOD OUIJA - Doll & Gann

Winners Bitch - DOX RUBY MY DEAR BLACKSLATE

Reserve Winners Bitch - MYDOGGE IT'S A TIGGER

Veteran Bitches

1. CH. TAURALAN TRIGA DE AZTECA - Gaskins
2. CH. LADYBUG IM CHLOE, CD - Roach

9 - 12 Month Dogs

1. TAURALAN WILD HEART TALISMAN - Charlton
2. IRONGATE'S TRI TARTON - Sharp

American Bred Dogs

1. ZEUS' STRONGMAN HERCULES - Jones
2. BARON BEAUJOLAIS OF BULLMAST - Hill
3. SOUND OFF'S DESPERADO - Molik
4. DJ'S BARTHOLOMEW OF WALKING BEAR - McDonnell

9 - 12 Month Bitches

1. DOX RUBY MY EAR BLACKSLATE - Crawford
2. IRONGATE'S ASIAN SUGAR - Potter
3. IRONGATE'S CALIFORNIA RAISIN - Kapple

American Bred Bitches

1. MYDOGGE IT'S A TIGGER - Gingrich
2. NEMESIS PEG OF MAGNUM - Blalock

High Scoring Obedience -

BEAUTY'S BLESSING OF BULLMAST - O'Brien
187 points

Best of Breed

CH. WILD HEART'S IRON EAGLE - Brooks

Best of Opposite Sex

CH. UPPER CRUST'S CARTE BLANCHE -Gaskins

Best of Winners - TAURALAN WILD HEART TALISMAN

**1990 AMERICAN BULLMASTIFF ASSOCIATION
NATIONAL SPECIALTY**

PROFESSIONALLY VIDEOTAPED

B & D VIDEO

24217 HODGES LANE, HOMELAND, CA 92348
714-926-1673

VHS ONLY

The video package consists of two tapes containing the Sweepstakes and the Specialty classes.
There is an audio presentation of each entry.

\$ 75.00
5.05 tax
4.00 shipping & handling

\$ 84.05

ALLOW 6 TO 8 WEEKS FOR DELIVERY

MAKE PAYABLE TO AND MAIL TO B & D VIDEO AT ABOVE ADDRESS.

OO

RIGHT NOW RECIPES

SPAGHETTI WITH BUTTER, PARMESAN, AND BROWNE BACON

This dish serves 4 to 5 people and takes 30 minutes, start to finish, to prepare.
Add a salad and either cheese bread or garlic bread for a complete meal.

- | | |
|--|--------------------------------|
| 4 strips bacon, cut into 1/2 inch pieces | 1/2 cup grated Parmesan cheese |
| 1 pound spaghetti | 2 Tbsp chopped fresh parsley |
| 4 Tbsp butter | |

1. Saute the bacon until browned; drain on paper toweling; discard fat.
2. Cook the spaghetti in plenty of boiling salted water until al dente, or firm to the bite, about 6 minutes; ladle out about 1/4 cup of pasta cooking liquid; reserve. Drain pasta.
3. Melt the butter in the pasta cooking pan until just creamy; add the pasta, reserved cooking liquid, and cheese; toss. Sprinkle with the bacon and the parsley. Toss once and serve.

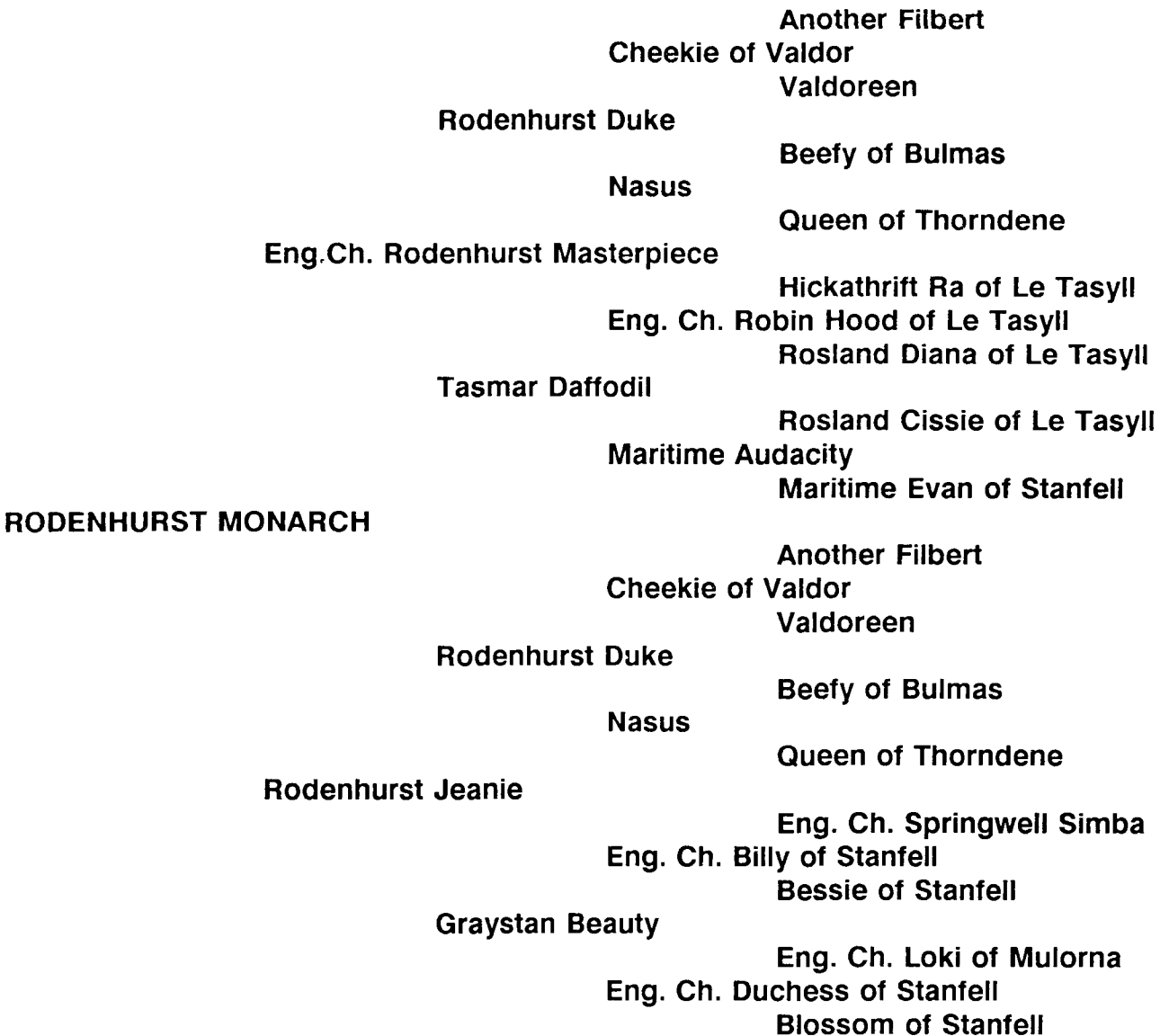
LYME DISEASE VACCINE

The United States Department of Agriculture has granted conditional licensing to a vaccine developed for the prevention of Lyme disease. The vaccine will be distributed by Fort Dodge Laboratories. Lyme disease has been reported in almost every state. It is transmitted through the bite of the deer tick. The vaccine is called Borela Burgdorferi Bacterin. Fort Dodge Laboratories is continuing its testing program on this vaccine. For further information contact Fort Dodge Laboratories, P O Box 518, Fort Dodge, IA 50501.

oo

PERTINENT PEDIGREES

The following pedigree is of **RODENHURST MONARCH**, a red dog imported from England to Canada, who had a very strong influence on the Bullmastiffs of the western United States as well as western Canada.



THE 1991 BULLMASTIFF CALENDAR

Orders are now being taken for THE 1991 BULLMASTIFF CALENDAR. Each month has it's own full page photo of a Bullmastiff and enough room for notations on each date. A whelping calendar is included at the back of the regular calendar.

These calendars may be ordered as presents and a gift card will be included at no extra cost.

The calendars are printed on a limited basis; only 150 per year. If you want to be sure to get one, order early.

CALENDARS WILL BE MAILED NO LATER THAN THE FIRST WEEK OF DECEMBER.

\$9.00 PER CALENDAR (INCLUDING POSTAGE)

MAKE CHECKS PAYABLE TO: AND MAIL TO:

**Carol Beans
12131 Arroyo Avenue
Santa Ana, CA 92705**

oo

**THE PEDIGREE PICTORIAL OF BULLMASTIFF CHAMPIONS
AND OBEDIENCE TITLISTS**

NOTICES FOR THE 1991 PEDIGREE PICTORIAL WILL BE MAILED IN JANUARY. THIS WILL BE THE 17TH CONSECUTIVE ISSUE OF THIS HISTORICAL AND INFORMATIVE PUBLICATION ON OUR BREED. THE PEDIGREE PICTORIAL CONTAINS PHOTOS AND THREE GENERATION PEDIGREES OF TITLED BULLMASTIFFS ON INDIVIDUAL PAGES, LISTING THE OWNER AND BREEDER OF EACH DOG.

IF YOU HAVE A DOG THAT HAS EARNED A CHAMPIONSHIP OR OBEDIENCE TITLE AND YOU WANT THAT DOG INCLUDED, PLEASE SEND ME YOUR ADDRESS SO THAT I CAN SEND YOU ALL THE INFORMATION NECESSARY TO PUT YOUR DOG IN THIS PUBLICATION. THE FEE WILL BE \$55 PER PAGE.

**Write To:
Carol Beans
12131 Arroyo Avenue
Santa Ana, CA 92705**

oo

A DIAMOND IS A CHUNK OF COAL THAT MADE GOOD UNDER PRESSURE.

THE TROUBLE WITH DOING SOMETHING RIGHT THE FIRST TIME IS THAT NOBODY APPRECIATES HOW HARD IT WAS.Walt West

