

American Bullmastiff Association Archives Committee

The Bullseye

Marilyn Cather Digitization Project

- generously funded by Lindy Whyte and Vince Grlovich

**ABA Bulletins digitized with club permission
Bullseyes and Pedigree Pictorials published by Carol Beans and digitized with permission**

The Bullseye



NEWS FOR, OF, AND BY BULLMASTIFF FANCIERS

VOLUME VI NUMBER 1

JUNE 1982



**Whenever I feel the urge to exercise coming on
I lie down until it passes over.**

TABLE OF CONTENTS

OBEDIENCE - Mona Lindau-Webb. 3

RIGHT NOW RECIPES - Carol Archer. 4

PUPPY ADS 4 & 5

VIVA LA DIFFERENCE - DateEmpire KC DESERT PRINTS. 5

PORTRAIT OF A PLAY ARFA - Jim Walkington. 6

FULL PAGE ADS 8 - 10

CRUFTS 1982 11

DOES FOOD CAUSE BLOAT? - Morris Animal Foundation Newsletter. 12

RECORDS - from AKC Record Keeping Pamphlet. 13

COMMON SENSE SUMMER DOG CARE - Louis J. Pegram. 14

The Bullseye is published
 bi-monthly in June, August,
 October, December, February,
 and April.

- - - - -

News, Ads, Articles, and
 Anecdotes are welcome. They
 are subject to editorial
 approval.

- - - - -

Opinions expressed and claims
 made are those of the author
 and may or may not be the opinion
 of the editor and publisher.

- - - - -

Editor - Publisher
 MRS. CAROL H. BEANS

Send any Obedience News to:
 Obedience Editor
 MONA LINDAU-WEBB
 1943 S. Holt Avenue
 Los Angeles, CA 90034

SUBSCRIPTION RATE: \$10 per year

ADVERTISING RATES:

Full Page with picture	\$30.00
Each additional picture	7.00
Full Page - no picture	20.00
Puppy-Dog Sales ads, announcements. 1/4 page no photo	7.50
50 Reprints of your Full Page Ad	10.00

BRFEDERS' LISTING is FREE of
 charge to all BULLSEYE subscribers
 in good standing with AKC.

SEND ALL MATERIAL (other than
 Obedience News) TO: and
 MAKE ALL CHECKS PAYABLE TO:

THE BULLSEYE

12131 Arroyo Avenue
 Santa Ana, CA 92705

 * * * * *
 * AUGUST ISSUE DEADLINE - *
 * * * * *
 * JULY 10th *
 * * * * *

OBEDIENCE

by MONA LINDAU-WFRB

Here is a good way to teach the Stand for Examination to puppies. It was sent in by Franceska Leichtman. I tried it, and it works very nicely. This is how:

"Place the 6-8 week old pup in an imperfect unposed standing position. Gently caress the pup with a brush while repeating softly "Stand" with every few strokes. When the pup stands still, rub the tummy with your free hand, as you brush the pup with the other. The pup who plunks his rump down is softly tapped on the tummy and gently scolded with, "No" and returned to standing and stroked. A puppy who runs or balks is held firmly in place by one hand under the stomach. Rarely lift feet off the ground to prevent his slipping away. This type of puppy requires more soothing talk and praise while being brushed.

Praise and tidbit rewards are called for after each lesson. This associates grooming, training and pleasure. Soon the puppies come running and stand before you whenever a brush is in your hand. Train to pose later by giving the "Stand" command followed by the "Stay". In heeling give the old "Stand" command before slowing to a halt, so that the automatic sit is voided. Then pose. Thus the movement is smooth enough to use in obedience and conformation at the same time. The tidbits in the conformation ring will of course add the finishing touches to a perfect pose."

Franceska also reminds us about an old saying: "Scolding is molding and beating is defeating."

* * * * *

I went to an AKC obedience workshop, held by the Southwest Obedience Association featuring AKC's Mr. Jim Dearinger, and judges Mr. Ron Roberts and Mr. Howard Cross, as well as a host of Southern California judges. The purpose of the workshop was to discuss the proposed changes in the obedience regulations. Demonstration dog-handler teams (including Bullmastiff Duchess) were judged by panels of judges, and the scores were discussed.

The major change in the obedience regulations is the change from "at a brisk pace" to "at a brisk trot or gallop" for all recalls and retrieves, and the utility go-out. It does not sound like much of a change, but the discussion made it very clear that the AKC is putting more emphasis on the working speed of a dog. The discussion revealed that a dog should work at a fast speed for his breed. Obviously a Bullmastiff will not dash around like a Sheltie or Toy Poodle, but our breed can work at a speed that looks fast for the breed. That is the intention. Thus a Bullmastiff that slowly waddles around the ring, trailing a couple of feet behind his handler, walking in at the recall, slowly ambling out to get the dumbbell, etc. will get considerably more heavily penalized now than in the past, even down to failing for lack of speed. So, now is the time to speed up your training. Run with the dog at heel, run away from him at the recall, maybe with goodies, so that he comes running in to you. Work on fast finishes. A slow finish will lose you 2-5 points. When the dog speeds up in general, his finishes will be faster, but encourage him a lot, praise, sound really excited to get him around briskly.

Another point that was continuously brought up was that the dog should stay in the heel position, i.e. dog's shoulders lined up with the handler's left leg, at all times when heeling. That is, any forge or lag away from this position spells points off. Any bump into you by the dog also means points off. This type of precise, ballet-like heeling is extremely difficult to teach to a bulky Bullmastiff. One way is to teach your Bullmastiff to keep his right shoulder very close to your left leg. Train on a two foot leash and hold the dog in this position as you work at a fast pace. This will improve his position, and most times it will make him bump you. The bumps will, however, lose you less points than the dog weaving back and forth. After the dog does stay in correct heel position, start working at getting the dog's shoulders away from you a little bit, using a lot of left turns, and using your hand to shove him gently away from you. This will all improve the dog's heeling position, but let's face it, this type of precision will take

OBEDIENCE (continued):

a lot more work on your part than if you had a little wound-up Sheltie-Toy. However, it can be done. Let's show them!

DAN RHONGLYN

ANNOUNCES

Big, Blocky Pups with type from

CH. WINDY HILL'S HANNIBAL (Dion)

OFA # BMF-410

X

DANRHONGLYN'S DAZZLIN DARLA

(daughter of CH. BLACKSLATE'S DARLING DALILAH)

(1981 National Specialty)

(Winners Bitch, Best of Winners, Best of Opposite Sex)

Dan & DaRhonda Gleason

35 Pan Abode Court

Santa Rosa, CA 95401

707-838-2578

RIGHT NOW RECIPES

This recipe was submitted by Carol Archer of Porter, Texas. It is really yummy!

"BET YOU CAN'T EAT JUST 1" TARTS

36 Miniature Reese's Peanut Butter Cups
1 14 oz. Peanut Butter Bake and Slice cookie roll

Spray miniature muffin tins with no stick spray. Preheat oven to 350 degrees.

Refrigerate peanut butter cups so paper can be peeled off without sticking. Follow directions for slicing cookie dough on wrapper. Drop a quarter slice in each muffin cup. Place in preheated oven and bake 8-10 minutes. Remove from oven and immediately push a peanut butter cup into center of each cookie. Heat of dough will melt the chocolate topping. Let pan cool and refrigerate until shine leaves chocolate. Gently remove each tart.

EDITOR'S NOTE: I tried Carol's recipe and she's absolutely right! The little devils hadn't even fully cooled before the family did them all in!

WHEN A HABIT BEGINS TO COST MONEY, IT'S CALLED A HOBBY!

ENVY IS A PAIN OF MIND THAT SUCCESSFUL MEN CAUSE THEIR NEIGHBORS.

.....Onasander

THE MAN WHO HAS NO SECRETS FROM HIS WIFE EITHER HAS NO SECRETS OR NO WIFE.

.....Gilbert Wells

VIVA LA DIFFERENCE

Reprinted from
SAVKC Bulletin, taken from
DESERT PRINTS, Date Empire KC

Did you know that there is a great difference between your dogs and mine?
You'd better believe it!

Your dogs are shy - mine are sensitive.

Yours are long coats - mine have strong coats.

Yours are fat - mine are substantial.

Yours are hysterical - mine are full of life.

Yours are vicious - mine are aggressive.

Yours are skinny minnies - mine are slow maturers.

Yours are spoiled rotten - mine are part of the family.

Yours are stupid - mine are slow learners.

Yours have nothing in front or rear - mine are balanced.

Yours is a rotten producer - mine was bred to the wrong bitch.

Your pups look wormy - mine are fat balls of fur.

Yours have washed out pigment - mine are out of coat.

Yours won a show because you knew the judge - mine won because the judge was good.

Yours lost because the judge was good - mine lost because the judge was no good.

Yours are uncontrollable - mine are exhuberant.

Yours messed in the house - mine had an accident.

Yours must be subluxed - mine has a sprained leg.

Shar-Dik

ANNOUNCES

MID-JUNE LITTER

out of our home-bred

CH SHAR DIK'S SONG OF SCHCHERAZADE

(Ch Lindley's Thunder ex Ch Shastid's CB Protest)

by

CH TAILWYNDE'S JOHNNY WALKER RED

(Tailwynde's Paine Webber ex Tailwynde's Mia McTavish)

For further information or reservations contact:

Richard & Sharon Soderquist

13008 Earl Roberts, San Antonio, TX 78253

PORTRAIT OF A PLAY AREA

by JIM WALKINGTON

Let's play a mental picture game for just a moment. I'll give you a word and you visualize a picture. ready? O.K., here's the word: SANDBOX!

What kind of sandbox did you think of? One that holds two or three kids, pails, shovels, and the occasional cat in the off season sandbox? THINK BIGGER!

Now you say your sandbox holds half-a-dozen kids packed in shoulder to shoulder nouring sand in each other's nockets. Wrong again!

The sandbox I have in mind is a veritable "Orson Wells of sandboxes". It is a monstrous contraption which measures 32 feet square, which takes forty tons of washed river sand to fill. This is a sandbox with redwood tower, complete with ramp, two levels, and a cement drain pipe which serves as a multipurpose step, crawl-through tunnel, or something on which to play king-of-the- mountain.

Your response to the description of such a play area may well be that whoever built such a set-up must either run a preschool or must have a lot of kids!

"No" on the first supposition--"yes" on the second. The people who built "THE" sandbox do have a lot of "kids". The people are Glenn and Charlene Dunlap of Chandler, Arizona. Their "kids" are two Dobermans, two Bullmastiffs, and a Toy Poodle. (Actually, the Poodle doesn't count. He's so old he probably doesn't recognize whether he's inside or outside -- let alone in a sandbox.)

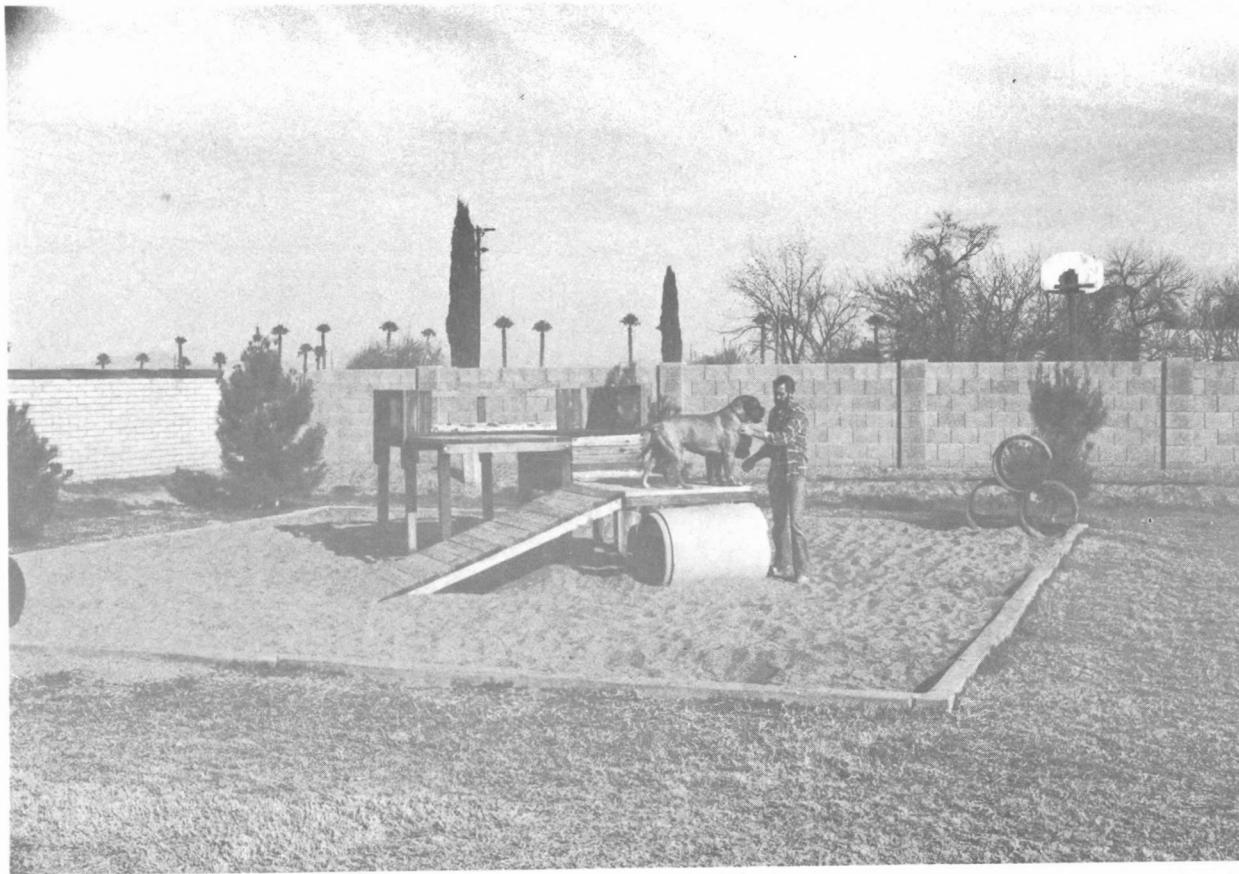
The play area/sandbox project started about a year ago when Charlene noticed the dogs, Rusty, Sasha and Tacker (Ch. Tauralan Brass Tacks) digging in a small, brick-enclosed tree well. As the Dunlaps reasoned, the dogs like to dig in the sand because it was loose and the digging was easy. Their excavations hadn't hurt the tree--yet. Therefore, the Dunlaps proposed, if the dogs were given their own sandy area in which to dig, they could exercise and have fun at the same time.

Over the next several months, the play area began to take shape. The 32 foot square area was staked off. Charlene hand-excavated the entire area to a depth of 18 inches. Glenn built the forms for a 6" high cement curb which would contain the four tandem-axle truck loads of sand.

The second Bullmastiff joined the Dunlap household in September of 1981. He is 10 month old Desert Grove's Ramblin Rufus. All the big dogs have remarkable thigh and shoulder muscle development, including the puppy. This is probably because they chase each other through the sand.

To the non-dog person, the sandbox/play area may seem an exercise in excess. However, examine it from this point of view. It represents the implementation of "creative discipline". The Dunlaps could originally have punished their dogs for digging in the tree well. Instead they displaced the dogs' urge to dig in the inappropriate area around the tree to a larger, more appropriate area. Let's consider what they have gained...Happier, better conditioned dogs for one. The dogs' urge to dig is confined to an area where they are allowed to dig; and finally if they ever sell their house to someone with a dozen kids, the sandbox would surely clinch the sale!

.....
PORTRAIT OF A PLAY AREA (continued):



TOP BULLMASTIFF ON TEXAS CIRCUIT

Including best of breed at ABA supported show



CH LINDLEY'S THUNDER

We would like to thank the following judges:

Mr. Nial Koonts

Mr. Charles Mulock

Mrs. Joan Rejholec

Mr. Robert Wills

Mr. Derek Rayne

Mr. Arnold Woolf

Mr. George Nichols
(ABA Supported Entry)

Mr. John Connolly

Mr. Hedio Ito

Mr. Theodore Wurmsler

Flash ! Two more THUNDER daughters just finished for their championships. That's SEVEN in just twelve months!

LINDLEY'S BULLMASTIFFS

56291 Handley Road, Yucca Valley, CA 92284
714-364-2581

TAILWYNDE, reg.



TAILWYNDE'S TRISH THE DISH

(pictured at 13 months)

A lovely, clear red, TRISH is sired by TAILWYNDE'S PAINE WEBBER x TAILWYNDE'S HEAD OVER HEELS, a J. PAUL daughter. TRISH started her show career with some nice wins, at 15 months. She picked up both majors and nine points as follows:

- April 19, Charlottesville-Albemarle KC judge Herman Fellton gave TRISH WB, BOW, & BOS for 2 points. (total entry - 10)
- April 20, Greater Fredricksburg KC judge Muriel Sonnichsen gave her WB, BOS for a 3 point major (total entry - 9)
- April 24, Old Dominion KC judge Eve Olson-Fisher gave her WB, BOW & BOS for a 4 point major (total entry - 22).

TRISH is 25 inches with heavy bone, good balance, and good angulation.

Dick & Adele Pfenninger

Calgary Farm, RD, #2, Box 228, Milford, NJ 08848
201-996-4769

TAURALAN



Ch Tauralan Tickety Boo

JENNY (pictured above) just finished her championship by sweeping the WB and BOS spots on all three days of the Raisin Circuit in California's San Joaquin Valley. JENNY is a VIC daughter out of TAURALAN PAULA TIGER PAWS. These were all 4 point majors.

LINDLEY'S EASY DOES IT, owned by Tom Swihart and sired by VIC went WD and BW on the same three days to gain all his championship points. He was bred by Eugene & Amelia Lindley.

Ben Baratto's handsome VIC son LORD DAN BOOKS OF WATERS EDGE, bred by the Barattos, has finished his championship taking WD 6 times this year in six outings.

TAURALAN is expecting several Summer litters either sired by VIC or out of his daughters. Fawn and Brindle pups will be available on a reservation basis.

We feel justly proud of our pups and the offspring of our sires from the quality bitches sent to them.

VIC and his son CH. TAURALAN HOLD THAT TIGER (1981 National Specialty Sweepstakes winner) are available at stud to approved bitches.

CAROL H BEANS

12131 Arroyo Avenue Santa Ana, CA 92705
714-730-9106 and 714-544-1824

CRUFTS 1982

LONDON, ENGLAND
Judge: A. C. CLARK

This report is presented through the kindness of MR. L. C. FROST, Hon. Secretary SOUTHERN BULLMASTIFF SOCIETY, England and MRS. MOLLY ELLIOTT, England

The program lists 58 Bullmastiffs entered in this show

Junior Dog (6)

1. TWYNFIELD'S BRYDEN - Calverly
2. LEYRIGG MAJOR CALUM - Lowerie
3. CLYTH TARBH TOBLAIR - Campbell

Junior Bitch (8)

1. TWYNFIELD'S DAVINA - Calverly
2. MAJOR BARBARA OF BUNSORO - Bates
3. IVYWILL WAGGA WAGGA OF COLOM - Cox

Post Graduate Dog (11)

1. TWYNFIELD'S ELFAZAR - Sutcliffe
2. BARRUS BEAUMENT - Russell
3. STRUANMOR AN NONA - Robertson

Post Graduate Bitch (11)

1. TWYNFIELD'S DAVINA - Calverly
2. JOSTMARO ESTA - Bateman
3. COLOM BPEEFZ - Cox

Limit Dog (8)

1. TADYOI BILRO BAGGINS - Collins
2. TWYNFIELD'S ELFAZAR - Sutcliffe
3. ROMANIE MAXIMILLIAN OF MAYMAR - Peart

Limit Bitch (10)

1. COOMBELANE RIVER WORLE - Pegler
2. JOSTMARO ESTA - Bateman
3. HONEY BELLE OF OLDWELL - Colliass

Open Dog (16)

1. BULLWARDINE GALAHADSON - Newton
2. COPPERFIELD SAMPSON - Jeans-Brown
3. LOMBARDY HARVEY - Price

Open Bitch (9)

1. CH VERONA OF OLDWELL - Colliass
2. CH TODOMAS TAMAR - Massey
3. BARRUS ANDROMEDA - Bateman

Dog Challenge Certificate
BULLWARDINE GALAHADSON

Bitch Challenge Certificate
CH VERONA OF OLDWELL

Reserve Dog Challenge Certificate
COPPERFIELD SAMPSON

Reserve Bitch Challenge Certificate
CH TODOMAS TAMAR

Best of Breed
CH VERONA OF OLDWELL

The judge noted the following about the CC and Reserve CC Winners:

DOG CC: BULLWARDINE GALAHADSON, a fawn; not large and I would have preferred more of him. Good square head, well pigmented, pleasing dark eye, excellent clear coat, nicely shaped ears but not using them to best advantage. Straight front, level back, well set tail, in excellent hard condition, beautifully presented, moved well.

DOG RES. CC: COPPERFIELD SAMPSON, a pale fawn, good pigment, carrying the correct weight for his size, moved with ease. Somewhat solemn expression. In very good condition, presented to best advantage.

BITCH CC & BOB: CH VERONA OF OLDWELL, my critique written in 1977 when I gave this bitch a CC and BOB at Midland Cos as a junior requires little alternation except that maturity has given her more size, strength and drive, she moved beautifully. In 1977 I noted--very well developed clear fawn with excellent coat and pigment correct throughout, well balanced, broad square skull, good ear carriage, deep broad chest and brisket, tail broad at root and well carried...Moved very well. A very worthy champion.

BITCH RES. CC: CH TODOMAS TAMAR, fawn with excellent pigmentation, well shaped square head, good strong neck, deep chest and brisket, nice dark toe nails on very good feet. Lost to 1 mainly on movement, is much less mature and could well improve.

DOES FOOD CAUSE BLOAT?

Reprinted from
MORRIS ANIMAL FOUNDATION
NEWSLETTER - April 1982

GAINESVILLE, FLA. --- The composition of dry cereal-based dog food may have a role in gastric problems of dogs, including bloat.

Dry cereal-type foods may stay in the dog's stomach longer than other types of food. This may allow bacteria time to manufacture gas in dogs susceptible to gastric problems and prevent the stomach from emptying normally.

A team of investigators headed by Colin F. Burrows, B.Vet. Med., Ph.D., M.R.C.V.S., University of Florida, hopes to learn more about the role of cereal-type foods and diet in bloat. The study is sponsored by Morris Animal Foundation with contributions to a special bloat fund.

The exact cause of bloat remains unknown, and a combination of factors may be linked to the disease. Some suggest bloat may result when dogs swallow large amounts of air with their food. Others believe that diet may be a factor.

Bloat is a life-threatening disease that can strike suddenly with little warning. Deep chested, larger breed dogs appear to be affected most often.

A noticeably swelling stomach, rapid breathing, retching, distress or restlessness are symptoms of bloat.

Bloat is also known as gastric dilation or torsion, which indicates expansion or twisting of the stomach. Bloat results when gas builds up quickly in the stomach because the dog's mechanism for normal emptying of the stomach fails. Why the mechanism fails is unknown.

Gastric torsion, however, involves twisting of the stomach, with the stomach's contents trapped within. The rapidly enlarging stomach puts increasing pressure on the lungs and abdomen, causing respiratory and circulatory problems. This leads to severe shock and immediate veterinary attention is needed to save the dog's life.

Even with immediate attention by a veterinarian, in dramatic and severe cases, dogs may still die from bloat. Bloat may strike repeatedly and the time from the beginning of symptoms to death can be less than eight hours.

The investigators believe if more can be learned about the role of diet in bloat, important information about the disease and its treatment may surface.

EDITOR'S NOTE: If you wish to contribute to the support of research on bloat, you may send your donation to MORRIS ANIMAL FOUNDATION BLOAT FUND. It is then used solely for research on this disease.

THE SOUTHERN BULLMASTIFF SOCIETY IN ENGLAND HAS A HANDBOOK RECENTLY PRINTED. It contains interesting articles and many photos and advertisements for current dogs and their kennels. Information on acquiring this Handbook may be obtained from:

MR. L. FROST, Hon. Secretary, Southern Bullmastiff Society, 16 Greenhow, Wildridings, Bracknell, Berkshire, England.

Records

Reprinted from AKC pamphlet
on Regulations For Record Keeping
and Identification of Dogs

To provide a source of reference for registration or transfer applications which have been made or may later be made to the American Kennel Club, and to assure the accuracy of such applications, certain minimum records must be kept.

ALL REQUIRED RECORDS MUST BE MADE IMMEDIATELY, when dog is acquired and delivered, and at time of mating, whelping, or death. Records must be kept on forms devoted to that exclusive purpose and must be consecutive, accurate, up-to-date, and maintained for at least five (5) years.

A. RECORDS TO BE KEPT BY OWNERS AND BREEDERS

1. The owner (and the lessee if a dog is leased) shall keep a record of each dog owned (or leased) which will show:

Breed

Registered name and number (or litter number if not registered)

Sex, color, and markings

Date of birth

Names and numbers of sire and dam

Name of breeder

Name and address of person from whom DIRECTLY acquired

Date of acquisition

Date and duration of lease, if any

and when dog is sold, is given away, or dies:

Name and address of person to whom DIRECTLY sold or delivered

Date sold or delivered or date of death

Kind of papers and date supplied

In addition the owner (or lessee, if dog is leased at that time) shall keep the following breeding records:

2. Whenever dog is mated to another dog:

Date and place of mating

Names of persons handling mating

Registered name and number of dog to which mated

Name and address of its owner

3. and (if a female) when resulting litter is whelped:

Date of whelping

Number of puppies whelped by sex and by color and markings

Litter registration number

Date of sale, gift or death of each puppy so described

Name and address of person acquiring each puppy so described

Kind of papers and date supplied

Registered name and number of each puppy registered by breeder

- ## B. RECORDS TO BE KEPT BY PERSONS OR FIRMS WHO SELL OR GIVE AWAY DOGS BRED BY OTHERS, INCLUDING DEALERS, PET SHOPS, AND PERSONS ACTING AS AGENTS OR BROKERS OR SELLING ON CONSIGNMENT. (Editor's Note: This section applies to stud owners selling pick of litter puppies).

For each UNREGISTERED DOG...Breed, Sex, color and markings, date of birth, litter number (when available), names and numbers of sire and dam, and name of breeder

For each REGISTERED DOG....Breed, registered name, registered number

For ALL dogs.....Name and address of person from whom DIRECTLY acquired

Date of acquisition

Name and address of person to whom DIRECTLY sold or given, kind of papers supplied and date

Date sold or delivered or date of death

Common Sense Summer Dog Care

by LOUIS J. PEGRAM, Director,
Professional Services
PUJRNA KENNEL NEWS, Volume 74/Issue 3

Most kennel operators and dog owners know that proper dog care during the hot summer months is no picnic. As the temperatures climb, so does the need for following a rational feeding program, strict sanitation measures, and a proper dog health-care program recommended by your veterinarian.

SUMMER FEEDING TIPS

On very hot summer days many dogs will eat less. It's a good idea to feed your dogs in the early morning or late evening when it is cool, and remove any uneaten rations before food sours.

Self-dry-feeding works well during the summer. Keeping feeders only partially filled cuts down on waste and prevents overfeeding. Always keep fresh water available at all times because water is essential to prevent dehydration in your dogs during very hot periods. If dogs are self-dry-fed, their food can be left before them at all times.

A completely balanced, commercial dry type of ration gives puppies everything they need for normal growth. Growing puppies should be fed often, but smaller amounts of food when liquid is added to their dry dog food ration. This type of sensible summer feeding program will reduce food souring, as well as flies and other insects congregating on the uneaten portion of the moist ration.

SANITATION AND HEALTH CARE TIPS

One reason a strict kennel sanitation program should be followed during summer months is the occurrence of heartworm disease in all sections of the country. Regardless of the size of your kennel population, all adult dogs should be checked for heartworms by your veterinarian. This parasitic disease is spread by the mosquito.

Heartworm disease cannot be cured or controlled by conventional deworming as can round, hook, whip, and tapeworms. During the early stages of the disease you will seldom notice any abnormality in weight or coat condition.

The best method of early detection of heartworms is by microscopic examination of blood samples from your dogs by a veterinarian. In most cases, heartworms can be eliminated from a dog if caught early.

Of course, your veterinarian is the best judge of proper treatment for heartworm disease.

The best method for preventing recurrence of heartworms is to keep down the number of mosquitoes in your kennel area and prompt treatment of any infected dogs. If heartworms prevail in your area, keep your kennels screened so the dogs have minimum exposure to mosquitoes. Draining marsh lands and still water areas which are not in use aids in preventing mosquitoes from hatching.

SUMMER KENNEL TIPS

Here are some other ideas that can make summer living easier on your dogs:

Proper sleeping quarters are a major necessity in keeping dogs healthy and happy. Remove all straw or hay bedding as this can cause skin irritation.

Have an area for your dog to sleep in comfort. Whether it's a dog house, kennel box, or open wooden pallet inside the kennel, it should allow dogs a dry, yet cool place to sleep.

Dogs that rub skin off of elbows should have some type of carpeting or soft material over

COMMON SENSE SUMMER DOG CARE (continued):

the floor of their beds, so that joints do not become irritated, puffed or raw.

Dogs can be great fun in summer if you follow a sensible program of planned kennel management. This is a season when common sense must be used in handling dogs. Dogs which come out of the summer months in top condition generally show to the best advantage when called on for more strenuous exercise and training during the fall and winter months.

BEFORE DOGS, I:

from the NASA Newsletter
by way of the BCOSC Newsletter
donated by PATRICIA O'BRIEN

Never had to fix liver for anything.

Lived in the city, had extra money, and thought I was sane.

Bought clothes for myself instead of dog shows.

Thought a tie was something a man wore around his neck.

Didn't own a pooper scooper, grooming table, 5 crates, or 4 exercise pens.

Thought a professional handler was an agent for a fighter.

Thought a major was an officer in the Army

Never told my kids to sit and stay.

Never owed a Vet a dime.

Would come home from a party at 4 a.m., not leave for a dog show then.

Never worried about parasites or kennel cough.

Had furniture without dog hair on it.

Didn't worry about dog show or whelping calendars.

Had long hair and time to groom it.

Thought "in season" referred to the latest fashion.

Thought "bitch" was a swear word.

Didn't worry if my skirts had pockets.

Thought bait was used for fishing.

Thought politics took place only in Washington.

Thought a match was something used to light a fire.

Had a phone bill I could afford.

Thought if someone was "finished" he was six feet under.

BREEDERS' LISTING

BAD'NUFF

M/M John Dorach
1100 Agnew Dr
Drexel Hill, PA 19026
215-446-9644

BENNATO

Ralph Furno
231 E. Blacklidge
Tucson, AZ 85705
602-792-2519

BLACKBEARD

Mr W P Delory
Rte 1, Box 36A5
Mokelumne Hill, CA 95245

BLACKSLATE

Virginia Rowland &
Mary Barbara Walsh
The Common,
Templeton, MA 01468
617-939-5300

BLUEGRASS

Joel & Mary Anne Duchin
1319 Dayton Ave
Dayton, KY 41074

BOUND'S

Mae Bound
530 Hazel St
Millbrae, CA 94930

BROOKHAVEN

Paul Lipson
2A Bianci Rd
Patchogue, NY 11772
516-475-5139

BRUSH BUSTER

Ronald Holm
409 Grandview
Round Lake Park, IL 60073
312-546-1803

BULLCROFT

Paul Moody
Rte 2, Box 574
Billion, SC 29536
803-774-6983

BULLMAST

M/M Tom O'Brien
1012 Dolores Dr
Fullerton, CA 92633
714-870-5235

BULLOCK

Ken & Debbie McEllian
Dark Lane Rd
New Ipswich, NH 03071

CEDAR RIDGE

Dr/Mrs James Beattie
Suite 207
101 Broad St
Lake Geneva, WI 53147
414-248-4793

CINNABAR

Jesse & Frances Fitch
13635 Brazo Rd
La Mirada, CA 90638

DAN WINGLYN

M/M Dan Gleason
35 Pan Agode Court
Santa Rosa, CA 95401
707-838-2578

DESERT GROVE

Mrs Ann Corson
7844 S 9th St
Phoenix, AZ 85040
602-268-1138

ELYON

Emely Major
2401 Auburn Ave
Dallas, TX 75214
214-328-7364

EVERGREEN

Karan M. Tremoulis
54061 Brackin Rd
Bridgeport, OH 43912
614-635-2625

FIRESIDE

Paula Braz
4218 Henning Dr
Concord, CA 94521
415-686-1881

GAD'S HILL

M/M Leonard Triggs
Box 422
Birdsboro, PA 19508
215-582-2483

HAPPY OURS

Bud & Fran Haven
RFD #1, Box 27A
Dexter, ME 04930
207-924-7009

KNIGHTDOGGE

M/M Joe Fielding
4743 Balsam
Las Vegas, NV 89108

LADYBUG

Geraldine Roach
RD 11, Forked Neck Rd
Vincetown, NJ 08088

LESTRADE

M/M LeRoy D'Rate
RR 1
Palmyra, MO 63461

LINDLEY'S

Eugene & Amelia Lindley
56291 Handley Rd
Yucca Valley, CA 92284
714-364-2581

KISHMET

Victor Zeoli
26801 Clarksburg Rd
Damasus, MD 20750
301-253-3938

LIONOID

Jim Walkington
2025 E. Laguna Rd
Tempe, AZ 85282

NEE-NOR

Virginia Bastiaans
4514 David Lane
Crystal Lake, IL 60014
815-459-5316

NEMESIS

Deborah Jackson
9107 SE Reedway
Portland, OR 97266
503-777-2750

NIGHTDOG

Billy & Anna Hataway
1521 Jo Ann Drive
Garland, TX 75042
214-272-6969

NORTHWEST PASSAGE

M/M Ron Chadwick
21740 John St
Perris, CA 92370
714-657-5066

NUTIKET

M/M Russell Weeks
133 Chase Ave
Ivyland, PA 18974
215-674-4532

OAKBROOK

Rodney & Judy Hendrick
11937 Oak Shadow Dr
Baton Rouge, LA 40810
504-769-3930

OLE

David & Christine Olson
RR #1, Rock River Terrace
Bvron, IL 61010

RICHARDSON'S

Glenn Richardson
13267 McCulloch Ave
Saratoga, CA 95070
408-378-3296

RICRO

M/M Richard Burns
2779 Aspen Circle
Snellville, GA 30278
404-972-2811

ROCKYRIVER

Valery & Pat Neil
RR #2
Washago, Ontario,
LOK 2B0, Canada

SEM-PEDRO

Carolyn Coleman &
Mildred Pickles
Rte 1, Box 936
Madison, FL 32340
904-971-5802

SHAR-DIK

Richard & Sharon Soderquist
13008 Earl Roberts
San Antonio, TX 78253

SHAYLA

M/M Bill Walby
RR #1, Mason Road
Sechelt, B.C.
Canada V0N 3A0

STAGEDOOR

Melody Restorick
23700 Williams Lane
Perris, CA 92370

SYLVAN SENTINELS

Barbara Brant
17001 Merriman
Livonia, MI 48154
313-421-0366

TAILWYNDE

Mrs Adele Pfenninger
Calgary Farm
Box 228, RD 2
Milford, NJ 08848
201-996-4769

TAURALAN

Mrs Carol Beans
12131 Arroyo Avenue
Santa Ana, CA 92705
714-730-9106
714-544-1824

TENACITY

M/M Victor Robinett
4539 Newton,
S. Torrance, CA 90505
213-375-6084

THOR'S GLEN

Mrs Anne Thorburn
434 Country Club Rd
Bridgewater, NJ 08807
201-722-0665

TOROUS

Bud & Pauline Smith
P O Box 1210
Oakhurst, CA 93644

VALGARDE

Ms Patricia Valentine
Rte 1, Box 282A
Woodruff, SC 29388

WEDGEWOOD

Ron & Virginia Stark
Williamsville Rd
Hubbardston, MA 01452
617-928-4410

WINDY HILL

Arthur Lambert
3242 San Carlos Dr
Spring Valley, CA 92077